

N NARGESA®

SECTION BENDING MACHINES

MC150B



+ than 40 years
manufacturing industrial machinery

SECTION BENDING MACHINES

The pipe and section bending machines Nargesa with two or three traction rollers, either hydraulic or mechanic system are ideal for making all kinds of bends, curves, shapes on different pipes and profiles no matter the material to be use: aluminium, stainless steel, mild steel, copper, galvanized pipe for making staircases, tube spirals, pipe flanges, greenhouses, railings, tables, chairs, doors and even windows. Hydraulic section bending machines are accurate when making bends on T-profiles, angles, U-profiles, round pipes and bars, square bars and pipes, flat bars. It is the kind of industrial machinery that will allow the user to have countless bending possibilities.

GET A QUOTE

Please complete the following form. We'll contact you in less than 24 hours.
Business days.

HOW IT WORKS VIDEO

Video on how the machine works.



Follow us on



MC150B

- > Two drive rollers.
- > Diameter of axes: 40 mm.
- > Useful axes length: 74 mm.
- > Center distance between lower axes: 230 mm.
- > Maximum capacity for bending round pipe: 2 inches or 50 mm.



MC200

- > Two drive rollers.
- > Diameter of axes: 40 mm.
- > Useful axes length: 74 mm.
- > Center distance between lower axes: 286 mm.
- > Maximum capacity for bending round pipe: 2 1/2 inches or 63.5 mm.



MC200H

- > Two drive rollers.
- > Diameter of axes: 40 mm.
- > Useful axes length: 74 mm.
- > Center distance between lower axes: 286 mm
- > Maximum capacity for bending round pipe: 3 inches or 76.2 mm.



MC400

- > Three drive rollers.
- > Diameter of axes: 40 mm.
- > Useful axes length: 80 mm.
- > Maximum capacity for bending round pipe: 2 1/2 inches or 63.5 mm.
- > Independent bending regulation of the lower rollers.



MC650

- > Three drive rollers.
- > Diameter of axes: Inferiores 65 mm / Superior 80 mm.
- > Useful axes length: 130 mm.
- > Center distance between lower axes: 202 mm.
- > Maximum capacity for bending round pipe: 4 inches or 101,6 mm.
- > Independent bending regulation of the lower rollers.

BENDING CAPACITY

Sizes indicated in the following chart are estimated, they are closely related to pipe harness and quality.



	MC150B		MC200		MC200H		MC400		MC650	
Section	Size	Min. Radius	Size	Min. Radius	Size	Min. Radius	Size	Min. Radius	Size	Min. Radius
	50x10	300	50x10	300	50x10	250	60x10	200	100x20 80x20	1250 450
	60x20	200	80x20	150	80x20	150	80x20	150	100x25 80x20	350 200
	25x25	200	30x30	200	30x30	150	30x30	150	45x45 25x25	300 200
	50x50x3	700	50x50x3	600	50x50x3	600	50x50x3	450	70x70x4 40x40x3	750 350
	40	200	40	200	40	150	40	200	80* 70 40	500 400 150
	40	250	40	250	40	200	40	250	80* 60 40	500 400 150
	50	200	60	300	60	225	60	225	120* 100* 80	600 600 400
	50	250	60	300	60	225	60	225	120* 100* 80	700 700 400
	40	500	40	420	40	200	40	300	70 40	600 250
	25	180	30	150	30	150	30	150	50 25	300 175
	40x2* 50,8x3* = 2"x3*	300 600 600	40x2* 63,5x3* = 2"1/2x3*	250 500 500	40x2* 63,5x3* = 2"1/2x3*	200 450 450	40x2* 76,2x2* = 3"x2*	200 500 500	88,9x4* 101,6x3* = 4"x3*	700 700 700

* Optional rollers

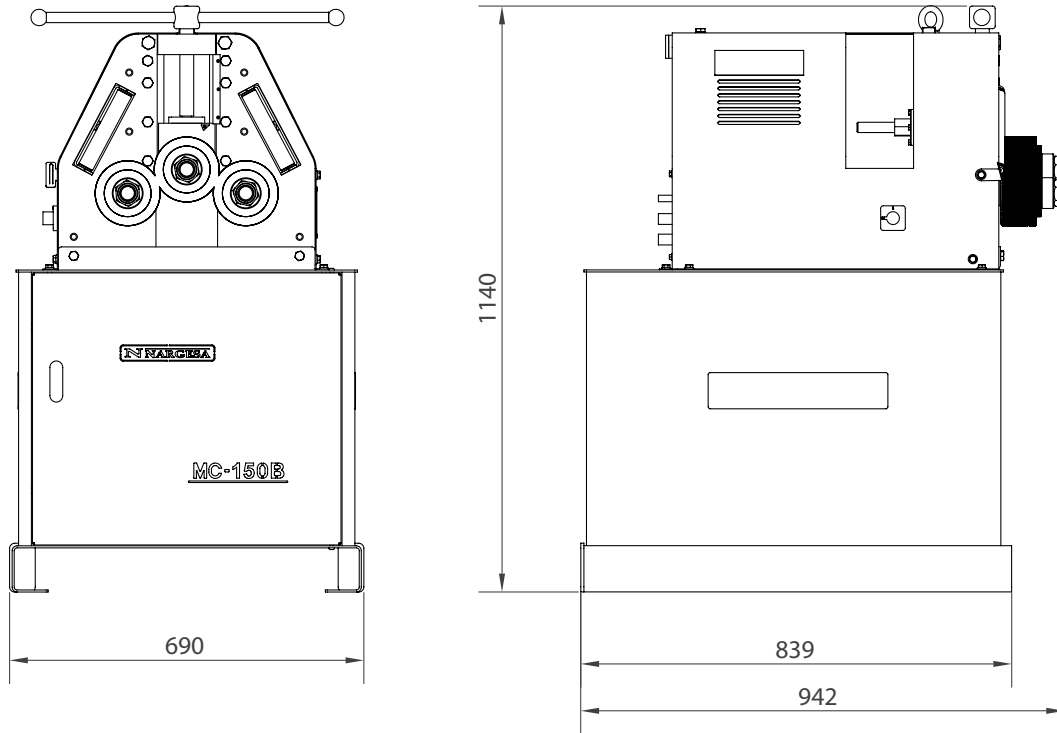
TECHNICAL FEATURES

The pipes and profiles pyramidal bending machine Nargesa MC150B is made of machined steel, with two traction rollers, hardened gear transmission. Maximum capacity for bending round pipe: 2 inches or 50 mm.

- > Diameter of axes: 40 mm.
- > Useful axes length: 74 mm.
- > Center distance between lower axes: 230 mm.
- > Maximum capacity for bending round pipe: 2 inches or 50 mm.
- > Bending regulation by the upper shaft, which allows to curve tube and profile dimensions and profiles of large diameter without deformation.
- > We supply the section bending machine MC150B with 9 rollers and standard washers, that can be combined and make all kinds of profiles.
- > Millimeter scale for bending in the upper shaft.
- > Two working positions, horizontal and vertical in the same workbench.
- > Correction rollers on the sides to control the bending deformation when making spirals and spiral staircases.
- > Base cupboard for rollers and accessories.
- > Motor Power: 0.75 KW / 1 HP.
- > Voltage supply: 3 phased 230/400 V or 230 V 1 phased.
- > For other voltages, contact the manufacturer.
- > Rollers speed: 6 RPM

** All our products are manufactured in our facilities in Spain. The hydraulic and electrical components are all standard from the best leading European trademarks, with technical assistance all over the world: Rexroth, Bosch, Roquet, Schneider Electric, LG, Telemecanique, Pizzato etc...*

OUTSIDE DIMENSIONS



PACKAGING CHARACTERISTICS

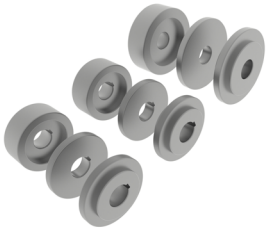
- Tariff Item Code: 84622998
- Lower bench palletized to easily transport the machine to the workplace or store it in case of lacking space.
- The machine is shipped fully assembled.
- Pallet made of steel and 3 layer cardboard box suitable for seafreight.
- Optional: Fumigated wooden box NIMF15.

MC150B

Width	700 mm
Depth	950 mm
Height	1150 mm
Volume	0.76 m ³
Net Weight	270 Kg.
Gross Weight	280 Kg.

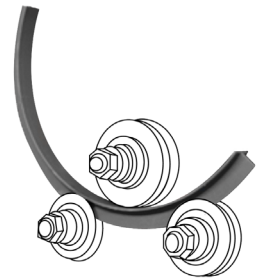
INCLUDED ACCESSORIES FOR SECTION BENDING MACHINE

Standard rollers MC150B



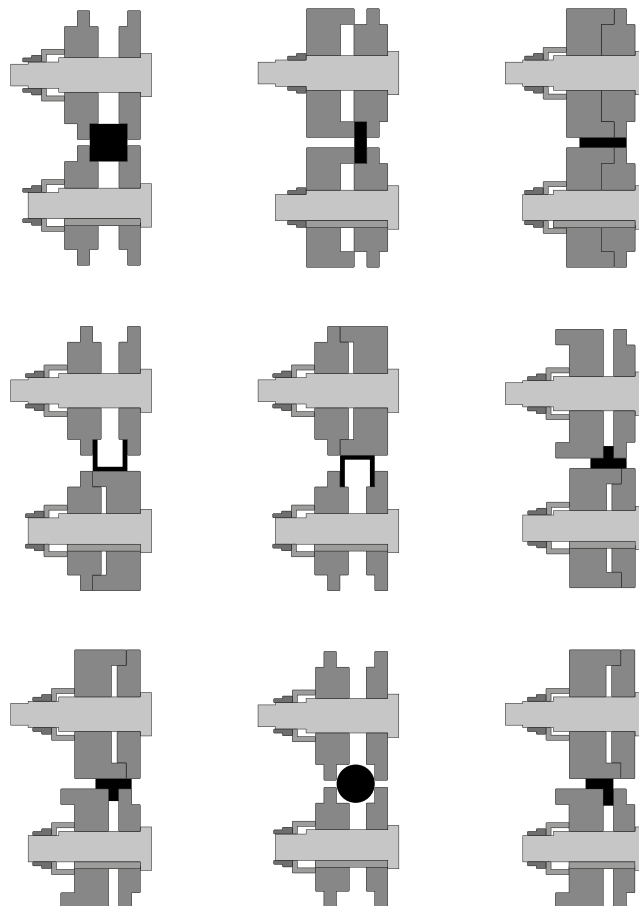
It's equipped with 9 standard pieces, by means of which the user can work all kinds of profiles. Square, rectangular pipe, solid round and square bars. U Profile, T profile, angle, flat bar, edged flat bar...

Adjustable rollers, by washers with the size of profile or pipe which allows us to make bending to different pipe or profile sizes.



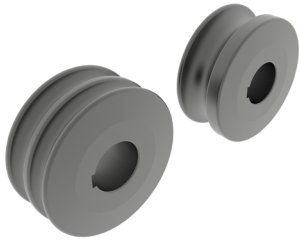
Steel rollers F1140 treated and rectified.

Assembling of the rollers



OPTIONAL ACCESSORIES

Treated steel rollers



Rollers made of Steel F-1140 and treated to 62 Rc. Suitable for bending all kind of round steel or stainless steel pipes.

Always clean up the rollers well before using stainless steel not to get the pipe contaminated.



For tube

mm	Weight	ISO mm	Weight	Inches Whitwort	Weight
(25+30)*	17,00 Kg.	(21,3+26,9)*	17,70 Kg.	(1/2"+1"1/4)* = (12,700 + 31,751 mm)	18,00 Kg.
(20+35)*	16,50 Kg.	(17,2+33,7)*	17,00 Kg.	(1"+3/4")* = (25,401 + 19,051 mm)	18,50 Kg.
40	16,60 Kg.	42,4	16,00 Kg.	1"1/2 = 38,101 mm	17,25 Kg.
50	14,25 Kg.	48,3	14,40 Kg.	2" = 50,802 mm	13,60 Kg.
60	11,10 Kg.	60,3	11,15 Kg.	2"1/2 = 63,502 mm	9,75 Kg.
70		76,1		3" = 76,2 mm	

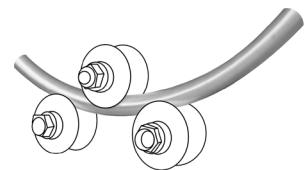
* When the tube measurements are small, two measurements are added on the same roller.

Sustarin Rollers



Rollers made of Sustarin to bend round stainless steel pipes, aluminium and delicate materials with thickness not bigger than 2.5mm.

Sustarin rollers do not damage nor get the pipe contaminated.



For tube in mm

(25+30) - (20+35) - 33 - 40 - 43 - 50 - 50,8 - 60

Weight

2,5 Kg.

* When the tube measurements are small, two measurements are added on the same roller.

OUR RANGE OF MACHINERY



IRON WORKERS



SECTION BENDING
MACHINES



NON-MANDREL PIPE
BENDER



HORIZONTAL PRESS
BRAKES



TWISTING/SCROLL
BENDING MACHINES



HYDRAULIC PRESS
BRAKES



HYDRAULIC SHEAR
MACHINES



GAS FORGES



IRON EMBOSsing
MACHINES



END WROUGHT IRON
MACHINES



BROACHING MACHINES



POWER HAMMERS



PRESSES FOR LOCKS

WARRANTY

Nargesa machines have 3 years warranty provided that the customer registers it in our website. Otherwise it would be only one year warranty. This one encloses any manufacturing default all along these 3 years for components. Any misuse is excluded from this condition. Labor, back and forth shipping and any eventual repair, are not included in this warranty.

Partner companies.



Airpharm

SHIPMENT EVERYWHERE

Nargesa will arrange transport up to final destination, whenever the customers asks for so. There is also the possibility for the customer to arrange the shipment himself with his own agency.

TECHNICAL ASSISTANCE

All our customers have access to technical support quickly and efficiently.

90% of incidences are solved out on the phone, mail, Skype or video-conferencing in less than 24hours. In case of needing presencial technical assistance, we may as well send a technician to the customer's facilities.

Follow us on

PRADA NARGESA, S.L.

Ctra. De Garrigàs a Sant Miquel s/n
17476 Palau de Santa Eulalia (Girona) Spain
Tel. +34 972 568 085

www.nargesa.com

nargesa@nargesa.com



This information might undergo changes