

N NARGESA®

IRONWORKER MACHINE

MX340G



+ than 40 years
manufacturing industrial machinery

IRONWORKER MACHINE

Multifunctional Punching machine
MX340G NARGESA, 40 tons and MX700
NARGESA 70 tons. Their gooseneck,
displacement and wide working table
make both of them a very versatile
tooling: they punch, fold, cut, inlay, etc...

GET A QUOTE

Please complete the following form. We'll contact
you in less than 24 hours.

Business days

HOW IT WORKS VIDEO

Video on how the machine works



Follow us on

MX340G

- > Hydraulic power: 40 Tn.
- > Working speed: 7,1 mm/sec.
- > Return speed: 9,3 mm/sec.
- > Punch displacement: 100 mm.
- > Neck: 180 mm.
- > Table Dimensions 245x265 mm.
- > Swinging front safety protection.
- > Activation with safety pedal.
- > Digital display.
- > Parts and strokes counter.
- > Alarm diagnose.
- > Motor power: 2,2 KW/ 3 HP.



MX700

- > Hydraulic power: 70 Tn.
- > Working speed: 9 mm/sec.
- > Return speed: 14 mm/sec.
- > Punch displacement: 160 mm.
- > Neck: 350 mm.
- > Table dimensions 600x350 mm.
- > Swinging front safety protection.
- > Activation with safety pedal.
- > Digital display.
- > Parts and strokes counter.
- > Alarm diagnose.
- > Motor power: 5,5 KW/ 7,5 HP.



TECHNICAL FEATURES

All purpose ironworker machine MX340G NARGESA more than 40 tons. Its neck, displacement and wide working table turn it into a very versatile tooling: It pierces, folds, cuts, inlays, etc...

- > Hydraulic power: 40 Tn.
- > Working speed: 7,1 mm/sec.
- > Return speed: 9,3 mm/sec.
- > Punch displacement: 100 mm.
- > Neck: 180 mm.
- > Table Dimensions 245x265 mm.
- > Swinging front safety protection.
- > Activation with safety pedal.
- > Digital display.
- > Parts and strokes counter.
- > Alarm diagnose.
- > Motor power: 2,2 KW/ 3 HP.
- > Tension 3 phase: 230/400 V.
- > For other tensions or single-phased machines ask the manufacturer.

PUNCHING:

- > All kinds of punches can be supplied: round ones, square, oval, locks punches. Punching can be also made in a pipe.

OTHER APPLICATIONS:

- > There are a lot more applications for it. More than 40 standard tooling to make different jobs.

NO STANDARD APPLICATIONS:

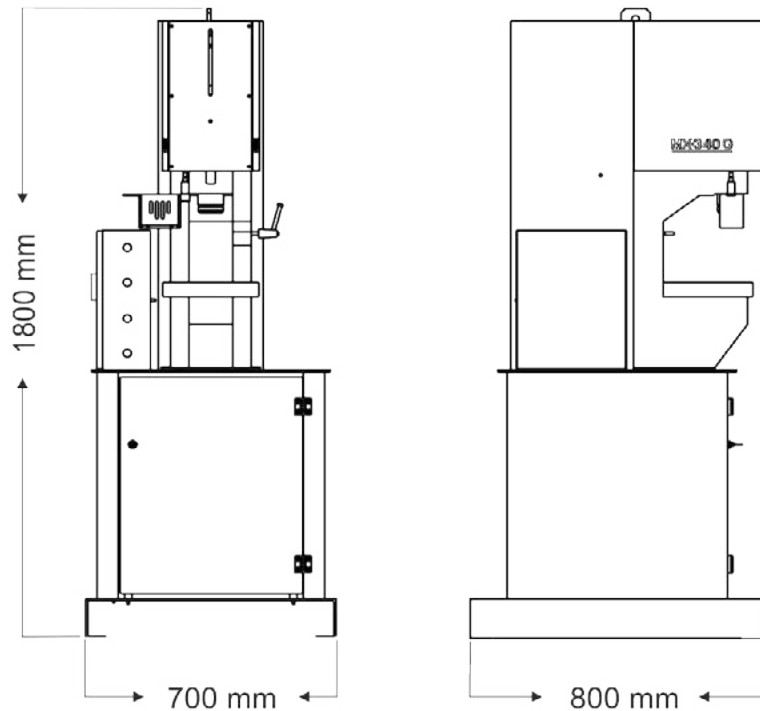
- > If the customer requires it we can manufacture under-request tooling to make all kinds of parts.

ADVANTAGES:

- > It is different from the rest of the other multifunctional universal punching machines because of its 180mm gooseneck, 100mm displacement and wide working table that allows to fit any kind of tooling.
- > Many of our customers make their own tooling.
- > Fast change of tooling, Max. 30 seconds.
- > Displacement adjustment allows an increase on productivity.
- > There is no maximum dimension for punching.

** All our products are manufactured in our facilities in Spain. The hydraulic and electrical components are all standard from the best leading European trademarks, with technical assistance all over the world: Rexroth, Bosch, Roquet, Schneider Electric, LG, Telemecanique, Pizzato etc...*

OUTSIDE DIMENSIONS



PACKAGING CHARACTERISTICS

- Tariff Item Code: 84624990
- Lower bench palletized to easily transport the machine to the workplace or store it in case of lacking space.
- The machine is shipped fully assembled.
- Pallet made of steel and 3 layer cardboard box suitable for seafreight.
- Optional: Fumigated wooden box NIMF15.

MX340G

Width	700 mm
Depth	800 mm
Height	1800 mm
Volume	1 m ³
Net Weight	615 Kg
Gross Weight	625 Kg

INCLUDED ACCESSORIES FOR SECTION BENDING MACHINE

Fitting nut for punches and base holder for dies



> All nargesa hydraulic punching machines are equipped with the punching tool that includes the fitting nut for punches and the base holder for dies. The rest of accessories are optional, which means each customer equips his machine as desired.



Fitting nut for punches and base holder for dies.

OPTIONAL TOOLING

Pround punches and dies, square punches, oval punches, rectangular,



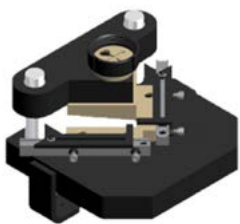
> In nargesa we have a wide catalogue of punches and dies of all kinds. If the size the customer needs is not in the list, we can make it.



In the PDF file you could see all the sizes we have.

Round punches and dies, square punches, oval punches, rectangular nargesa.

Stripper tooling 90° adjustable 100x100



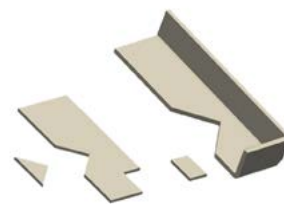
REF: 140-02-01-00005

- > Sheet stripping tooling, angle, etc.
- > Adjustable up to 100x100mm to 90° fix.

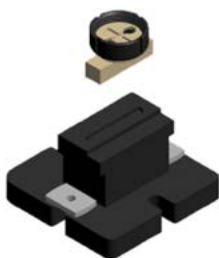
Max. Cutting capacity: 100x100x4mm.

Weight: 35 kg.

Optional tooling.



Ventilation grill tooling



REF: 140-02-01-00010

- > Tooling to make ventilation grill in metal sheet. With adjustable punching operations since they're made one by one.

Optional tooling.



Punching sizes	Max. Thickness	Weight
100x20mm	2mm	20 Kg.

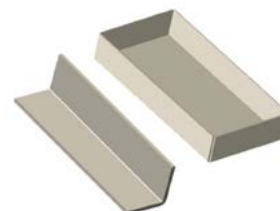
Folding tooling 100mm.



REF: 140-02-01-00003

- > Tooling to fold steel sheet and flat bar up to 100mm. Punch 88°.
- > Die with 56mm and 26mm v's.

Optional tooling.



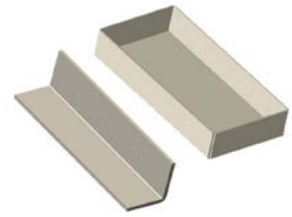
Max. Folding length	Max. Thickness	Weight
100mm	8 to 12mm	8 Kg.

Folding tooling 170mm.



REF: 140-02-01-00004

- > Tooling to fold steel sheet and flat bar up to 170mm. Punch 88°.
- > Die with 56mm and V 26mm V's.



Optional tooling.

Max. Folding length	Max. Thickness	Weight
170mm	8 to 12mm	12 Kg.

Flat bar cutting tooling 100x10mm.



REF: 140-02-01-00002

- > Tooling to cut metal sheet or flat bar from 0.8mm up to 10mm thickness.

Max. Cutting capacity: 100x10mm.
Weight: 28 kg.



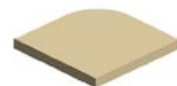
Optional tooling.

Tooling to round off corners



- > Tooling to round off the corners in metals sheets of different radius.

In the PDF file you will be able to see all kinds we have.



Tooling to round off corners

Flattening extractor



REF: 140-02-01-00039

> Extractor that acts like flattening flat bars while punching so they cannot be distorted during that process.

Max. Thickness for flat bar or solid bar: 15mm.

Weight: 15 kg.

Optional tooling.



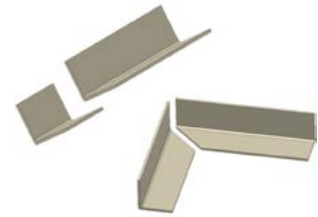
Angle cutting tooling



REF: 140-02-01-00001

> Tooling to cut angle to 90° and 45°.

Optional tooling.



Max straight cutting capacity	Max. Mitre cutting capacity	Weight
60x60mm	50x50	32 Kg.

Arrow tooling for metal sheet



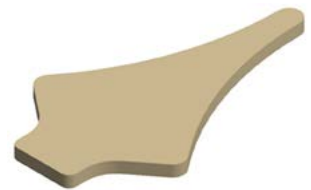
REF: 140-02-01-00006

> Tooling to punch steel sheet in arrow shape for fencing.

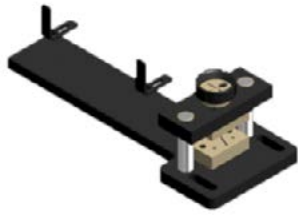
Max. Sheet thickness: 3mm.

Weight: 21 kg.

Optional tooling.



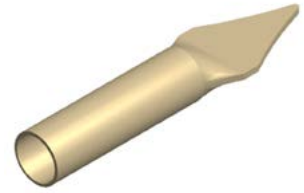
Arrows tooling for pipes



REF: 140-02-01-00007

> Tooling to flatten and cut pipe in arrow shape.
Suitable to different diameters.

Optional Tooling.



Max. Pipe diameter	Min. Pipe diameter	Weight
30x2mm	10x2mm	19 Kg.

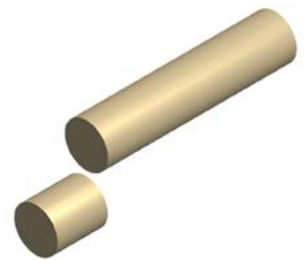
Round bar cutting tooling



REF: 140-02-01-00035

> Tooling to cut round solid bar from 3mm up to 35mm.

Optional Tooling.



Max. Cutting diameter	Min. Cutting diameter	Weight
35mm	3mm	15 Kg.

Punch and die for locks



REF: 140-02-01-00036

> Punch and die to make locks holes in metal sheet.

> Necessary complements: cab60 and tap40.

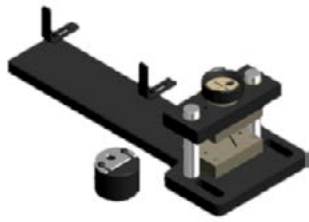
Max. Thickness: 6mm

Weight: 1 kg

Optional tooling.

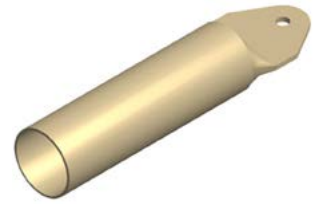


Pipe ends fencing tooling



REF: 140-02-01-00040

- > Tooling to flatten and punch the extreme of pipes for fencing.
- > Admits different pipes diameters.
- > The hole size is exchangeable.



Optional tooling.

Max. Pipe diameter	Min. Pipe diameter	Hole diameter	Weight
50mm	10mm	Changeable	23 Kg.

Pipe notching tooling



- > Pipe notching tooling from Ø16 to Ø60mm. It consists of cutting the extreme of a pipe so it can be joined to another one perpendicularly.



In the PDF file you will be able to see all kinds and sizes we have.



Pipe notching tooling.

Flat bar round end tooling



- > Tooling to make all kinds of flat bars with round ends, with or without hole, straight, round... Very used as handles, stands, etc...



- > Starting from a metal strip, a piece with the desired length comes out of it with every stroke.

In the PDF file you will see all kinds of shapes and sizes we have.



Flat bar round end tooling

Tooling for punching angle and U profile



REF: 140-02-01-00031

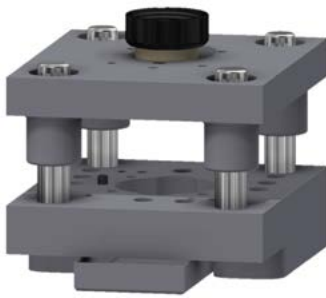
- > Tooling to punch angles.
- > Exchangeable punches and dies of different sizes.



Optional tooling.

Max. Hole diameter	Min. Hole diameter	Weight
28mm	2mm	9 Kg.

Set of cutting and shaping die holders for MX340G



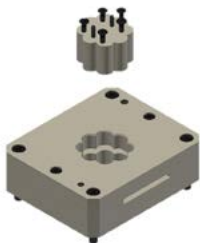
REF: 140-02-01-00042

- > Set of die holders to be adapted cutting and shaping tooling for decorative flower elements.

Pieces per set: 2
Weight: 58 kg

Optional tooling.

Flower cutting die D65 8 petals MX340G



REF: 140-02-01-00043

- > Die for cutting 8 petals flower shaped metal sheet, d65mm.
- > For its use, it is required the die holder for cutting and shaping MX340G.



REF: 140-02-01-00042

For any other different designs, ask the manufacturer.

Optional tooling.

Pieces per set	Thickness	Weight
2	1 - 1,5 - 2 - 3mm	10,5 Kg.

Flower inlaying tooling D65 8 petals MX340G



REF: 140-02-01-00044

- > Die for moulding 8 petals flower shaped metal sheet, d65mm.
- > For its use, it is required the die holder for cutting and shaping mx340G.



REF: 140-02-01-00042

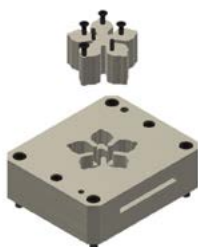
REF: 140-02-01-00043

For any other different designs, ask the manufacturer.

Optional tooling.

Pieces per set	Thickness	Weight
2	1 - 1,5 - 2 - 3mm	4,9 Kg.

Flower cutting die D85 5 petals MX340G



REF: 140-02-01-00045

- > Die for cutting flower shaped metal sheet, 5 petals with diameter 85mm.
- > For its use, it is required the die holder for cutting and shaping MX340G.



REF: 140-02-01-00042

For any other different designs, ask the manufacturer.

Optional tooling.

Pieces per set	Thickness	Weight
2	1 - 1,5 - 2mm	10,4 Kg.

Flower inlaying tool D85 5 petals MX340G



REF: 140-02-01-00046

- > Tooling for moulding 5 petal flower shaped metal sheet, diameter 85mm.
- > For its use, it is required the die holder for cutting and shaping MX340G.



REF: 140-02-01-00042

REF: 140-02-01-00045

For any other different designs, ask the manufacturer.

Optional tooling.

Pieces per set	Thickness	Weight
2	1 - 1,5 - 2mm	6,2 Kg.

Leaf cutting die 108x42 MX340G



REF: 140-02-01-00047

- > Tooling for cutting leaf shaped, 108x42mm.
- > For its use, it is required the die holder for cutting and shaping MX340G.



REF: 140-02-01-00042

For any other different designs, ask the manufacturer.

Optional tooling.

Pieces per set	Thickness	Weight
2	1 - 1,5 - 2 - 3mm	10,2 Kg.

Flower inlaying tool 108x42 left MX340G



REF: 140-02-01-00048

- > Tooling for moulding 108x42mm leaf shaped metal sheet, left.
- > For its use, it is required the die holder for cutting and shaping MX340G.



REF: 140-02-01-00042

REF: 140-02-01-00047

For any other different designs, ask the manufacturer.

Optional tooling.

Pieces per set	Thickness	Weight
2	1 - 1,5 - 2 - 3mm	6,2 Kg.

Leaf inlaying tool 108x42 right MX340G



REF: 140-02-01-00049

- > Tooling for moulding 108x42mm leaf shaped metal sheet, right.
- > For its use, it is required the die holder for cutting and shaping MX340G.



REF: 140-02-01-00042 and cutting die

REF: 140-02-01-00047

For any other different designs, ask the manufacturer.

Optional tooling.

Pieces per set	Thickness	Weight
2	1 - 1,5 - 2 - 3mm	6,2 Kg.

OUR RANGE OF MACHINERY



IRON WORKERS



SECTION BENDING
MACHINES



NON-MANDREL PIPE
BENDER



HORIZONTAL PRESS
BRAKES



TWISTING/SCROLL
BENDING MACHINES



HYDRAULIC PRESS
BRAKES



HYDRAULIC SHEAR
MACHINES



GAS FORGES



IRON EMBOSSING
MACHINES



END WROUGHT IRON
MACHINES



BROACHING MACHINES



POWER HAMMERS



PRESSES FOR LOCKS

WARRANTY

Nargesa machines have 3 years warranty provided that the customer registers it in our website. Otherwise it would be only one year warranty. This one encloses any manufacturing default all along these 3 years for components. Any misuse is excluded from this condition. Labor, back and forth shipping and any eventual repair, are not included in this warranty.

Partner companies.



Airpharm

SHIPMENT EVERYWHERE

Nargesa will arrange transport up to final destination, whenever the customers asks for so. There is also the possibility for the customer to arrange the shipment himself with his own agency.

TECHNICAL ASSISTANCE

All our customers have access to technical support quickly and efficiently.

90% of incidences are solved out on the phone, mail, Skype or video conferencing in less than 24hours. In case of needing presencial technical assistance, we may as well send a technician to the customer's facilities.

Follow us on

PRADA NARGESA, S.L.

Ctra. De Garrigàs a Sant Miquel s/n
17476 Palau de Santa Eulalia (Girona) Spain
Tel. +34 972 568 085

www.nargesa.com

nargesa@nargesa.com



This information might undergo changes