

**N NARGESA®**

## IRONWORKER MACHINE

# MX700



**+ than 40 years**  
manufacturing industrial machinery

# IRONWORKER MACHINE

Multifunctional Punching machine MX340G Nargesa 40 tons and MX700 Nargesa 70 tons. Their gooseneck, displacement and wide working table make both of them a very versatile tooling: they punch, fold, cut, inlay, etc.

## GET A QUOTE

Please complete the following form. We'll contact you in less than 24 hours.

*Business days.*

## HOW IT WORKS VIDEO

Video on how the machine works.



Follow us on

## MX340G

- > Hydraulic power: 40 Tn.
- > Working speed: 7,1 mm/sec.
- > Return speed: 9,3 mm/sec.
- > Punch displacement: 100 mm.
- > Neck: 180 mm.
- > Table Dimensions 245x265 mm.
- > Swinging front safety protection.
- > Activation with safety pedal.
- > Digital display.
- > Parts and strokes counter.
- > Alarm diagnose.
- > Motor power: 2,2 KW/ 3 HP.



## MX700

- > Hydraulic power: 70 Tn.
- > Working speed: 9 mm/sec.
- > Return speed: 14 mm/sec.
- > Punch displacement: 160 mm.
- > Neck: 350 mm.
- > Table dimensions 600x350 mm.
- > Swinging front safety protection.
- > Activation with safety pedal.
- > Digital display.
- > Parts and strokes counter.
- > Alarm diagnose.
- > Motor power: 5,5 KW/ 7,5 HP.

# TECHNICAL FEATURES

All purpose ironworker machine MX340G NARGESA more than 40 tons. Its neck, displacement and wide working table turn it into a very versatile tooling: It pierces, folds, cuts, inlays, etc.

- > Hydraulic power: 70 Tn.
- > Working speed: 9 mm/sec.
- > Return speed: 14 mm/sec.
- > Punch displacement: 160 mm.
- > Neck: 350 mm.
- > Table Dimensions 600x350 mm.
- > Swinging front safety protection.
- > Activation with safety pedal.
- > Digital display.
- > Parts and strokes counter.
- > Alarm diagnose.
- > Motor power: 5,5 KW/ 7,5 CV (HP).
- > Tension 3 phase: 400 V.
- > For other tensions or single-phased machines ask the manufacturer.

## **PUNCHING:**

- > All kinds of punches can be supplied: round ones, square, oval, locks punches. Punching can be also made in a pipe.

## **OTHER APPLICATIONS:**

- > There are a lot more applications for it. More than 40 standard tooling to make different jobs.

## **NO STANDARD APPLICATIONS:**

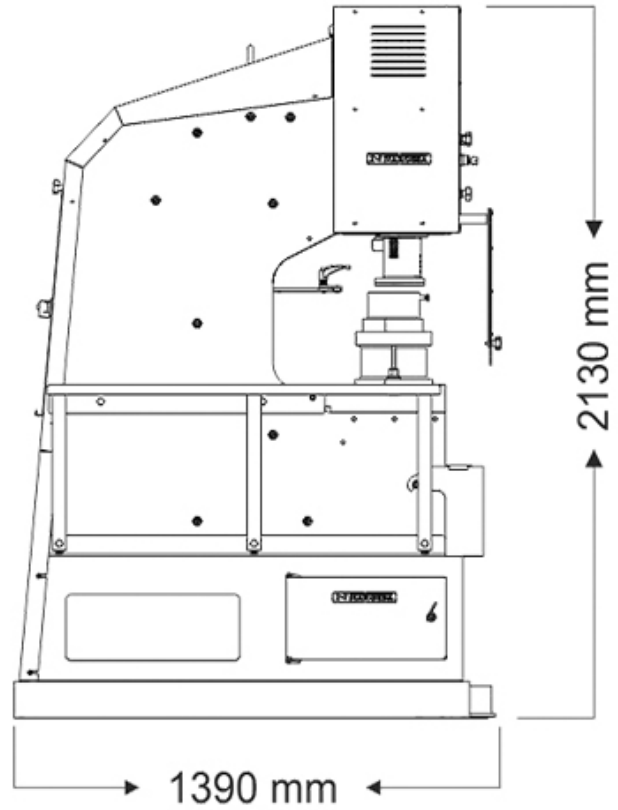
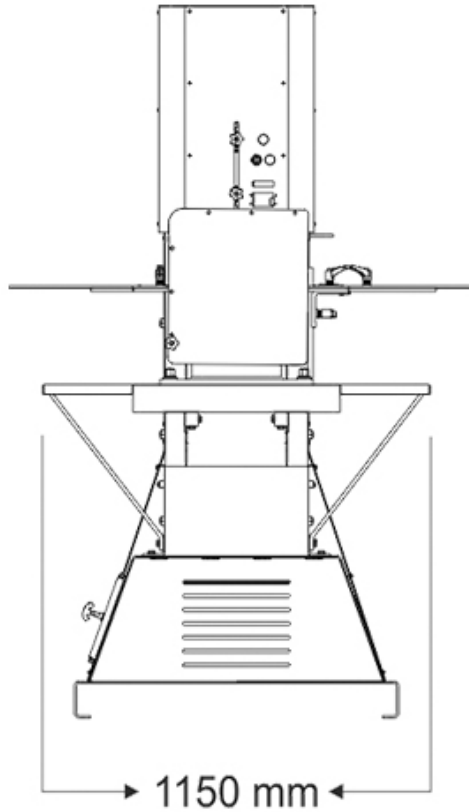
- > If the customer requires it we can manufacture under-request tooling to make all kinds of parts.

## **ADVANTAGES:**

- > It is different from the rest of the other multifunctional universal punching machines because of its 180mm gooseneck, 100mm displacement and wide working table that allows to fit any kind of tooling.
- > Many of our customers make their own tooling.
- > Fast change of tooling, Max. 30 seconds.
- > Displacement adjustment allows an increase on productivity.
- > There is no maximum dimension for punching.

*\* All our products are manufactured in our facilities in Spain. The hydraulic and electrical components are all standard from the best leading European trademarks, with technical assistance all over the world: Rexroth, Bosch, Roquet, Schneider Electric, LG, Telemecanique, Pizzato etc...*

## OUTSIDE DIMENSIONS



## PACKAGING CHARACTERISTICS

- Tariff Item Code: 84624990
- Lower bench palletized to easily transport the machine to the workplace or store it in case of lacking space.
- The machine is shipped fully assembled.
- Pallet made of steel and 3 layer cardboard box suitable for seafreight.
- Optional: Fumigated wooden box NIMF15.

### MX700

Width	1200 mm
Depth	1500 mm
Height	2150 mm
Volume	4 m <sup>3</sup>
Net Weight	2000 Kg
Gross Weight	2015 Kg

# INCLUDED ACCESSORIES FOR SECTION BENDING MACHINE

## Fitting nut for punches and base holder for dies

---



> All nargesa hydraulic punching machines are equipped with the punching tool that includes the fitting nut for punches and the base holder for dies. The rest of accessories are optional, which means each customer equips his machine as desired.



> In optional accessories, at the bottom of the page, he'll find the list of all possible standard punches and dies.

*Fitting nut for punches and base holder for dies*

## OPTIONAL TOOLING

### Pround punches and dies, square punches, oval punches, rectangular,

---



> In nargesa we have a wide catalogue of punches and dies of all kinds. If the size the customer needs is not in the list, we can make it.

> In the PDF file you could see all the sizes we have.



*Punches and dies for Nargesa MX700*

## Stripper tooling 90° adjustable 150x150 MX700



REF: 140-02-02-00001

- > Sheet stripping tooling, angle, etc.
- > Adjustable up to 150x150mm to 90° fix.

**Max. Cutting capacity:** 150x150x8mm.

**Weight:** 38 kg.

*Optional tooling.*



## Ventilation grill tooling MX700



REF: 140-02-02-00031

- > Tooling to make ventilation grill in metal sheet. With adjustable punching operations since they're made one by one.

*Optional tooling.*



Punching sizes	Max. Thickness	Weight
100x20mm	2mm	21 Kg.

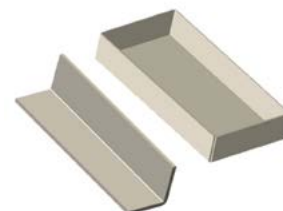
## Folding tooling 100mm MX700



REF: 140-02-02-00033

- > Tooling to fold steel sheet and flat bar up to 100mm.
- > Punch 88°.
- > Die with 56mm and 26mm v's.

*Optional tooling.*



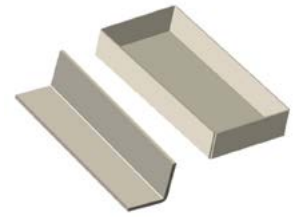
Max. Folding length	Max. Thickness	Weight
100mm	8 to 12mm	9 Kg.

## Folding tooling 170mm MX700



REF: 140-02-02-00034

- > Tooling to fold steel sheet and flat bar up to 170mm.
- > Punch 88°.
- > Die with 56mm and V 26mm V's.



*Optional tooling.*

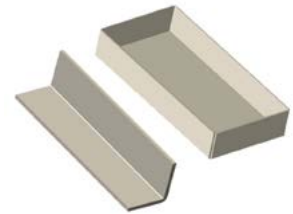
Max. Folding length	Max. Thickness	Weight
170mm	8 to 12mm	13 Kg.

## Folding tooling 350mm MX700



REF: 140-02-02-00035

- > Tooling to fold metal sheet and flat bar up to 350mm.
- > Punch: 88°.
- > Die with adjustable V of 120mm, 80mm, 40mm and 16mm.



*Optional tooling.*

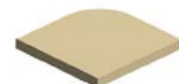
Max. Folding length	Max. Thickness	Weight
350mm	20 mm	45 Kg.

## Tooling to round off corners MX700



- > Tooling to round off the corners in metals sheets of different radius.

In the PDF file you will be able to see all kinds we have.



*Tooling to round off corners MX700*



## Flattening extractor MX700

---



REF: 140-02-02-00042

> Extractor that acts like flattening flat bars while punching so they cannot be distorted during that process.

**Max. Thickness for flat bar or solid bar:** 15mm.

**Weight:** 15 kg.

*Optional tooling.*



## Angle cutting tooling MX700

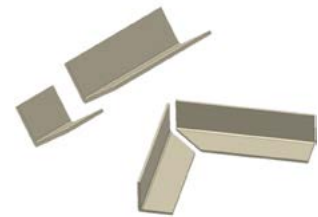
---



REF: 140-02-02-00036

> Tooling to cut angle to 90° and 45°.

*Optional tooling.*



Max straight cutting capacity	Max. Mitre cutting capacity	Weight
80x80 mm	50x50	35 Kg.

## Arrow tooling for metal sheet MX700

---



REF: 140-02-02-00041

> Tooling to punch steel sheet in arrow shape for fencing.

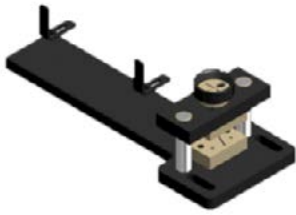
**Max. Sheet thickness:** 3mm.

**Weight:** 22 kg.

*Optional tooling.*



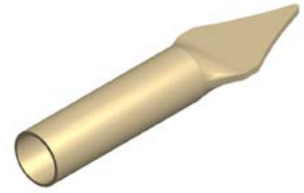
## Arrows tooling for pipes MX700



REF: 140-02-02-00040

> Tooling to flatten and cut pipe in arrow shape.  
Suitable to different diameters.

*Optional Tooling.*



Max. Pipe diameter	Min. Pipe diameter	Weight
30x2mm	10x2mm	20 Kg.

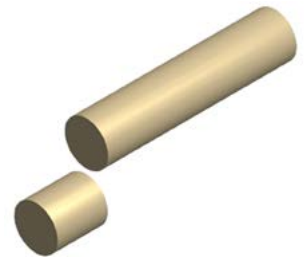
## Round bar cutting tooling MX700



REF: 140-02-02-00038

> Tooling to cut round solid bar from 3mm up to 35mm.

*Optional Tooling.*



Max. Cutting diameter	Min. Cutting diameter	Weight
35mm	3mm	16 Kg.

## Punch and die for locks



REF: 140-02-01-00036

> Punch and die to make locks holes in metal sheet.

> Necessary complements: cab60 and tap40.

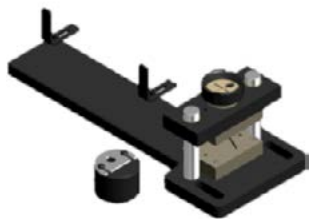
**Max. Thickness:** 6mm.

**Weight:** 1 kg.

*Optional tooling.*

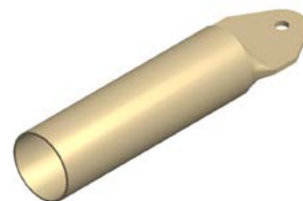


## Pipe ends fencing tooling MX700



REF: 140-02-02-00039

- > Tooling to flatten and punch the extreme of pipes for fencing.
- > Admits different pipes diameters.
- > The hole size is exchangeable.



*Optional tooling.*

Max. Pipe diameter	Min. Pipe diameter	Hole diameter	Weight
50mm	10mm	Changeable	24 Kg.

## Pipe notching tooling MX700



- > Pipe notching tooling from  $\varnothing 16$  to  $\varnothing 60$ mm. It consists of cutting the extreme of a pipe so it can be joined to another one perpendicularly.



- > In the PDF file you will be able to see all kinds and sizes we have.



*Pipe notching tooling MX700*

## Flat bar round end tooling MX700



- > Tooling to make all kinds of flat bars with round ends, with or without hole, straight, round... Very used as handles, stands, etc...
- > Starting from a metal strip, a piece with the desired length comes out of it with every stroke.
- > In the PDF file you will see all kinds of shapes and sizes we have.



*Flat bar round end tooling MX700*

## Tooling for punching angle and U profile



REF: 140-02-01-00031

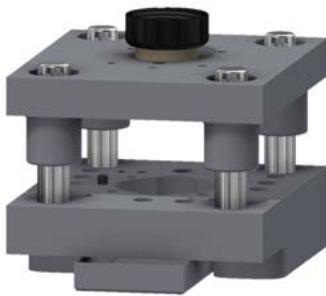
- > Tooling to punch angles.
- > Exchangeable punches and dies of different sizes.



*Optional tooling.*

Max. Hole diameter	Min. Hole diameter	Weight
28mm	2mm	9 Kg.

## Set of cutting and shaping die holders for MX700



REF: 140-02-02-00045

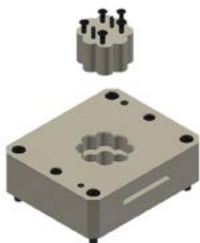
- > Set of die holders to be adapted cutting and shaping tooling for decorative flower elements.

**Pieces per set: 2.**

**Weight: 52,5 kg.**

*Optional tooling.*

## Flower cutting die D65 8 petals MX700



REF: 140-02-01-00043

- > Die for cutting 8 petals flower shaped metal sheet, d65mm.
- > For its use, it is required the die holder for cutting and shaping MX700.



REF: 140-02-02-00045

For any other different designs, ask the manufacturer.

*Optional tooling.*

Pieces per set	Thickness	Weight
2	1 - 1,5 - 2 - 3mm	10,5 Kg.

## Flower inlaying tooling D65 8 petals MX700



REF: 140-02-01-00044

> Die for moulding 8 petals flower shaped metal sheet, d65mm.

> For its use, it is required the die holder for cutting and shaping MX700.

REF: 140-02-02-00045

REF: 140-02-01-00043

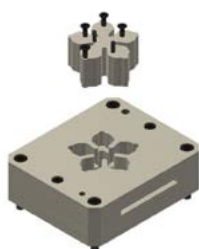
For any other different designs, ask the manufacturer.



*Optional tooling.*

Pieces per set	Thickness	Weight
2	1 - 1,5 - 2 - 3mm	4,9 Kg.

## Flower cutting die D85 5 petals MX700



REF: 140-02-01-00045

> Die for cutting flower shaped metal sheet, 5 petals with diameter 85mm.

> For its use, it is required the die holder for cutting and shaping MX700.

REF: 140-02-02-00045

For any other different designs, ask the manufacturer.



*Optional tooling.*

Pieces per set	Thickness	Weight
2	1 - 1,5 - 2mm	10,4 Kg.

## Flower inlaying tool D85 5 petals MX700



REF: 140-02-01-00046

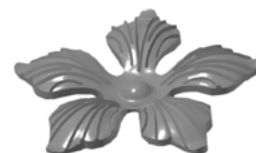
> Tooling for moulding 5 petal flower shaped metal sheet, diameter 85mm.

> For its use, it is required the die holder for cutting and shaping MX700.

REF: 140-02-02-00045

REF: 140-02-01-00045

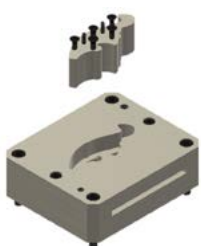
For any other different designs, ask the manufacturer.



*Optional tooling.*

Pieces per set	Thickness	Weight
2	1 - 1,5 - 2mm	6,2 Kg.

## Leaf cutting die 108x42 MX700



REF: 140-02-01-00047

- > Tooling for cutting leaf shaped, 108x42mm.
- > For its use, it is required the die holder for cutting and shaping MX700.



REF: 140-02-02-00045

For any other different designs, ask the manufacturer.

*Optional tooling.*

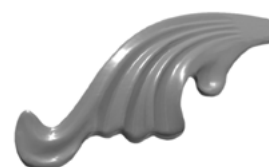
Pieces per set	Thickness	Weight
2	1 - 1,5 - 2 - 3mm	10,2 Kg.

## Flower inlaying tool 108x42 left MX700



REF: 140-02-01-00048

- > Tooling for moulding 108x42mm leaf shaped metal sheet, left.
- > For its use, it is required the die holder for cutting and shaping MX700.



REF: 140-02-02-00045

REF: 140-02-01-00047

For any other different designs, ask the manufacturer.

*Optional tooling.*

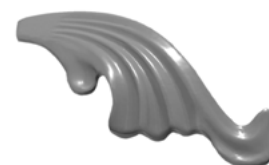
Pieces per set	Thickness	Weight
2	1 - 1,5 - 2 - 3mm	6,2 Kg.

## Leaf inlaying tool 108x42 right MX700



REF: 140-02-01-00049

- > Tooling for moulding 108x42mm leaf shaped metal sheet, right.
- > For its use, it is required the die holder for cutting and shaping MX700.



REF: 140-02-02-00045

REF: 140-02-01-00047

For any other different designs, ask the manufacturer.

*Optional tooling.*

Pieces per set	Thickness	Weight
2	1 - 1,5 - 2 - 3mm	6,2 Kg.

## Flat bar cutting tooling 200x20mm MX700

---



REF: 140-02-02-00002

> Tooling to cut metal sheet or flat bar from 0.8mm up to 20mm thickness.

**Max. Cutting capacity:** 200x20mm.

**Weight:** 54 Kg.

*Optional tooling.*



## Flat bar cutting tooling 100x12mm MX700

---



REF: 140-02-02-00037

> Tooling to cut metal sheet or flat bar from 0.8mm thickness up to 12mm.

**Max. Cutting capacity:** 100x12mm.

**Weight:** 29 Kg.

*Optional tooling.*



# OUR RANGE OF MACHINERY



IRON WORKERS



SECTION BENDING  
MACHINES



NON-MANDREL PIPE  
BENDER



HORIZONTAL PRESS  
BRAKES



TWISTING/SCROLL  
BENDING MACHINES



HYDRAULIC PRESS  
BRAKES



HYDRAULIC SHEAR  
MACHINES



GAS FORGES



IRON EMBOSSING  
MACHINES



END WROUGHT IRON  
MACHINES



BROACHING MACHINES



POWER HAMMERS



PRESSES FOR LOCKS



## WARRANTY

Nargesa machines have 3 years warranty provided that the customer registers it in our website. Otherwise it would be only one year warranty. This one encloses any manufacturing default all along these 3 years for components. Any misuse is excluded from this condition. Labor, back and forth shipping and any eventual repair, are not included in this warranty.

Partner companies.



Airpharm

## SHIPMENT EVERYWHERE

Nargesa will arrange transport up to final destination, whenever the customers asks for so. There is also the possibility for the customer to arrange the shipment himself with his own agency.

## TECHNICAL ASSISTANCE

All our customers have access to technical support quickly and efficiently.

90% of incidences are solved out on the phone, mail, Skype or video conferencing in less than 24hours. In case of needing presencial technical assistance, we may as well send a technician to the customer's facilities.

Follow us on

---

### PRADA NARGESA, S.L.

Ctra. De Garrigàs a Sant Miquel s/n  
17476 Palau de Santa Eulalia (Girona) Spain  
Tel. +34 972 568 085

[www.nargesa.com](http://www.nargesa.com)

[nargesa@nargesa.com](mailto:nargesa@nargesa.com)



---

This information might undergo changes