

N NARGESA®

TWISTING / SCROLL BENDING MACHINES

MT500A



+ than 40 years
manufacturing industrial machinery

TWISTING / SCROLL BENDING MACHINES

Nargesa Scrollmakers were patented years ago by PRADA NARGESA, this makes us be a leading company in the manufacturing of this kind of machines. This is manufactured in a welded and mechanized steel monoblock. It has been conceived to work in cold steel, ideal for making all kind of pieces for the ornamental forging, balusters, scrolls, etc... Scroll bending machines used in: Window grills, alabasters, chairs, tables, doors, fences, windows... Making a lot of different shapes in square, round, tubular, handrail, flat bar profiles.

GET A QUOTE

Please complete the following form. We'll contact you in less than 24 hours.

Business days

HOW IT WORKS VIDEO

Video on how the machine works



Follow us on

MT150A

- > Maximum twisting capacity 20 mm or 3/4" inch.
- > Maximum bending capacity 16 mm or 5/8" inch.
- > Maximum twisting and bending capacity in flat bar, clod or handrail 35X10 mm or 1 1/4"X3/8" inch.
- > Possibility of buying the tooling for the machine in mm or inches.
- > Maximum continuous scrolling length 960 mm.
- > CNC programmer to repeat series, piece counter, automatic unbolt, memories, etc.
- > Adjustable millimeter scale on its head to make all parts the same.



MT500A

- > Maximum twisting Capacity 40 mm or 1 3/8" inches.
- > Maximum bending capacity: 25 mm or 1" inches.
- > Maximum scrolling and bending capacity in flat bar, clod or handrail 50x10 mm or 2"x 3/8" inches.
- > Possibility of buying the tooling for the machine in mm or inches.
- > Maximum continuous twisting length: 1.620 mm.
- > CNC programmer to make high productions.
- > Adjustable rotation speed from 0 to 10 r.p.m.



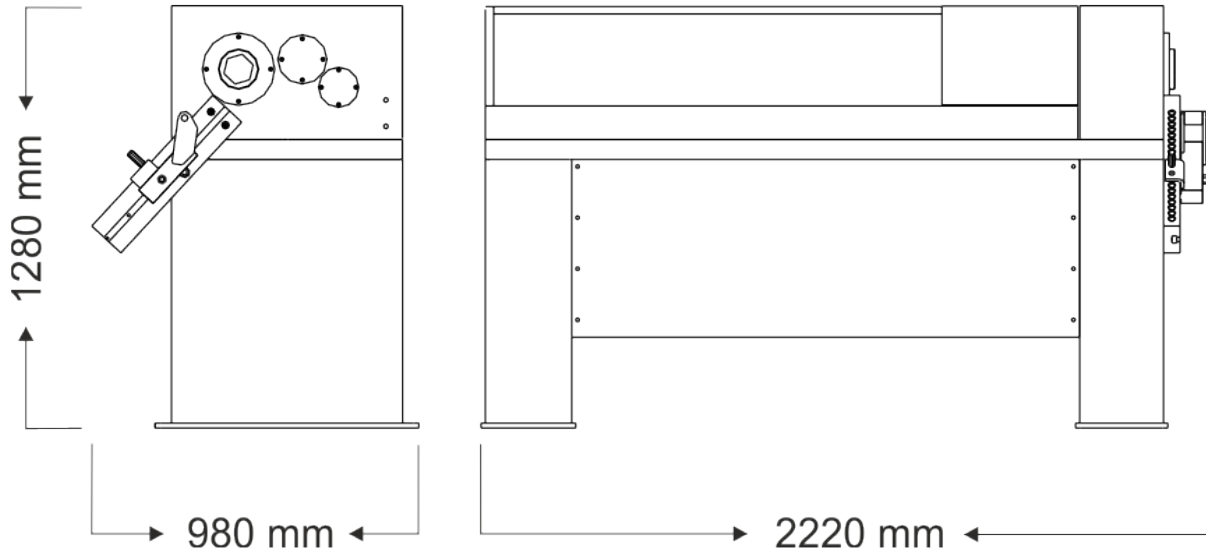
TECHNICAL FEATURES

The Automatic Scroll Making MT500A, with piece programmer, makes all kinds of pieces for the ornamental forging, balusters, scrolls, etc... Maximum twisting capacity: square 40 mm, maximum bending: square 25 mm.

- > Working method by twisting and flexion in cold.
 - > Machine suitable for small, medium and big productions.
 - > Safe and reliable transmission by a motor reducer with treated flat pinions, accomplishing a great performance with little maintenance.
 - > Its perfect for making all kind of standard ornamental pieces and essential to make your own designs which are much more demanded in the market.
 - > It's got two working sites, one for twisting and another one for bending with no neck limit.
 - > The forging equipment Nargesa MT500A is equipped with a set of tooling by means of which a great number of pieces can be made: Twisting, scrolls, hooks, chains.
 - > There is also the possibility of purchasing optional tooling: Belly Top Railing, British Rail, Flat bent rings, ornamental baskets.
-
- > Maximum twisting Capacity 40 mm or 1 3/8" inches.
 - > Maximum bending capacity: 25 mm or 1" inches.
 - > Maximum scrolling and bending capacity in flat bar, clod or handrail 50x10 mm or 2"x 3/8" inches.
 - > Possibility of buying the tooling for the machine in mm or inches.
 - > Maximum continuous twisting length: 1.620 mm.
 - > Motor power: 4Kw / 5,5 HP.
 - > CNC programmer to make high productions.
 - > 3-phased tension: 230/400 V.
 - > Adjustable rotation speed from 0 to 10 r.p.m.

** All or products are manufactured in our facilities in Spain. The hydraulic and electrical components are all standard from the best leading European trademarks, with technical assistance all over the world: Rexroth, Bosch, Roquet, Schneider Electric, LG, Telemecanique, Pizzato etc...*

OUTSIDE DIMENSIONS



PACKAGING CHARACTERISTICS

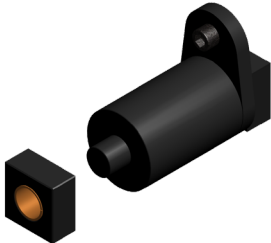
- Tariff Item Code: 84622998
- Lower bench palletized to easily transport the machine to the workplace or store it in case of lacking space.
- The machine is shipped fully assembled.
- Pallet made of steel and 3 layer cardboard box suitable for seafreight.
- Optional: Fumigated wooden box NIMF15.

MT500A

Width	2200 mm
Depth	1000 mm
Height	1480 mm
Volume	3,3 m3
Net Weight	1350 Kg.
Gross Weight	1450 Kg.

INCLUDED ACCESSORIES

Flat bent rings 80mm.

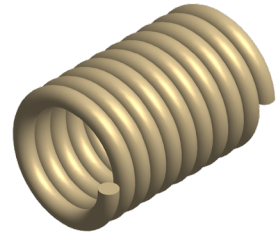


REF: 130-01-03-00010

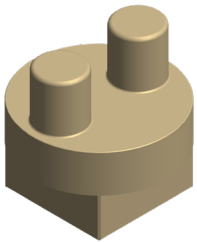
- > Tooling made of steel F1140 to make rings with 80mm inner diameter either in round or square.
- > The spiral cuts and some rings could be obtained to be put between the balusters.

Ring inner diameter: 80mm.
Max capacity: round or square 16mm.

Standard tooling.



Tooling for hooks and chains

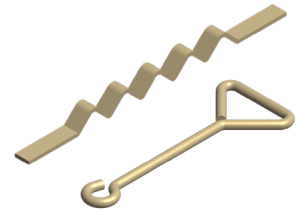


REF: 120-01-03-00007

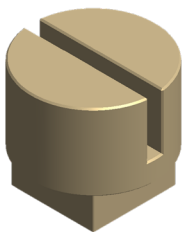
- > Microfusion treated tooling to make all kind of bending, hooks, chains, etc.
- > It bends all kind of material.
- > Flat bar 50x10mm.
- *For different diameters please ask the manufacturers.*

Maximum capacity: round or square 20mm.

Standard tooling.



Flat bar bending tooling

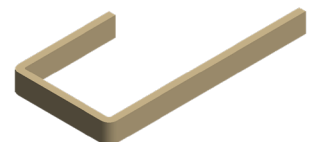


REF: 140-01-03-00011

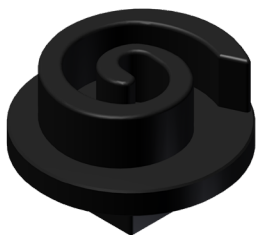
- > Tooling made of treated steel to make bending operations in flat bars, handrails or any kinds of clods.
- > Bending with minimum external radios.

Maximum capacity: flat bar 50x10mm.
Weight: 3,1 kg.

Standard tooling.



Spiral tooling diameter 120mm

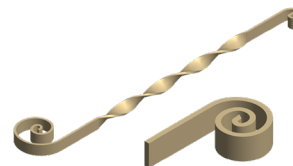


REF: 120-01-03-00117

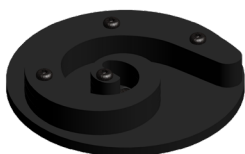
> Tooling made of treated steel F1140 to make the second operation of the spiral in flat bar, square or round maximum 10mm thickness.

Scroll external diameter: 120mm.
Max. Capacity: 40x8mm.

Standard tooling.



Spiral tooling diameter 220mm

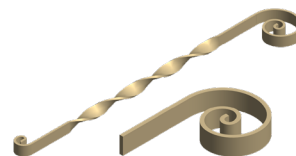


REF: 130-01-03-00172

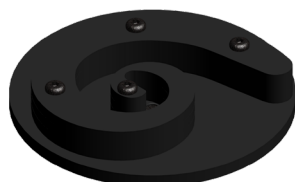
> Tooling made of steel F1140 to make the second operation of the spiral in flat bar, square or round maximum 16mm thickness.

Scroll external diameter: 220mm.
Maximum Capacity: 40x10mm.

Standard tooling.



Spiral tooling diameter 450mm

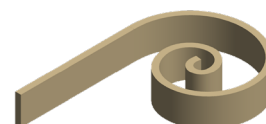


REF:130-01-03-00171

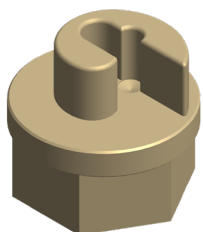
> Tooling made of steel F1140 to make the second operation of the spiral in flat bar, square or round maximum 25mm thickness.

Scroll external diameter: 450mm.
Maximum Capacity: 50x10mm.

Standard tooling.



Tooling for spiral start diameter 100mm



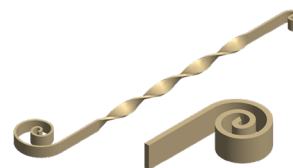
REF: 120-01-03-00116

> Tooling made of treated steel F1140 to make the start of the spiral in flat bar, square or round, 16mm maximum thickness.

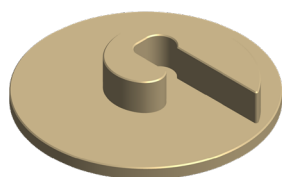
Volute external diameter: 100mm.

Maximum Capacity: 40x10mm.

Standard tooling.



Tooling to make spiral start diameter 180mm



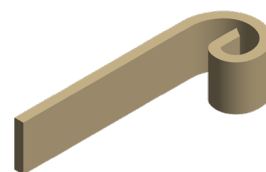
REF:120-01-03-000153

> Tooling made of treated steel F1140 to make the start of the spiral in flat bar, square or round, maximum 25mm thickness.

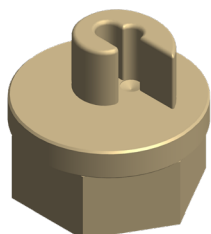
Volute external diameter: 180mm.

Maximum capacity: 50x10mm.

Standard tooling.



Tooling to make the spiral start diameter 80mm



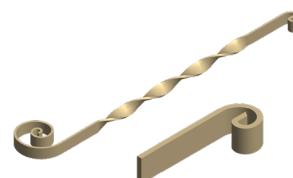
REF: 120-01-03-00115

> Tooling made of treated steel F1140 to make the start of the spiral in flat bar, square or round maximum 10mm thickness.

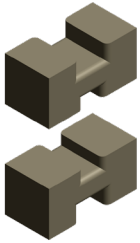
Volute external diameter: 80mm.

Maximum capacity: 40x8mm.

Standard tooling.



Tooling to make scrolls on square bars 12 and 35mm or 1/4" and 1 1/2" inches whitwort



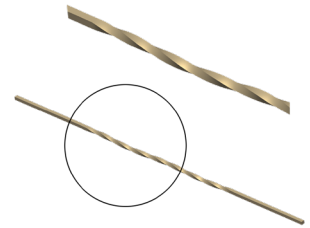
Units per machine: 2

> Tooling made of treated steel 140 to make the scrolling on square bars 12x12mm and 35x35mm or 1/4x1/4" and 1 1/2"x1 1/2" Inches Whitwort, on conventional mild steel.

REF: 120-01-03-00123 (12x12mm and 35x35mm)

REF: 125-01-03-00100 (1/4x1/4" and 1 1/2"x1 1/2" Inches Whitwort)

Standard tooling.



Tooling to twist square 14 and 30mm or 3/8" and 1 1/4" inch whitwort



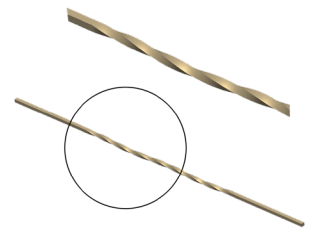
Units per machine: 2

> Tooling made of treated steel F1140 to make twisting operations in square 14x14mm and 30x30mm or 3/8"x3/8" and 1 1/4"x1 1/4" inches Whitwort, in Carbon coal.

REF: 120-01-03-00124 (14x14mm and 30x30mm)

REF: 125-01-03-00101 (3/8"x3/8" and 1 1/4"x1 1/4" inches Whitwort).

Standard tooling.



Tooling to twist square 16 and 25mm or 1" and 1/2" inches Whitwort



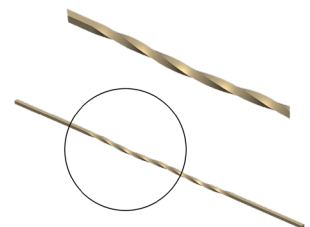
Units per machine: 2

> Tooling made of treated steel F1140 to make the twisting for 16x16mm square bar and 25x25mm or 1"x1" and 1/2"x1/2" inches Whitwort, in conventional carbon steel.

REF: 120-01-03-00125 (16x16mm and 25x25mm).

REF: 125-01-03-00102 (1"x1" and 1/2"x1/2" inches Whitwort).

Standard tooling.



Tooling to scroll 18 and 20mm square bar or 3/4" and 5/8" inches whitwort



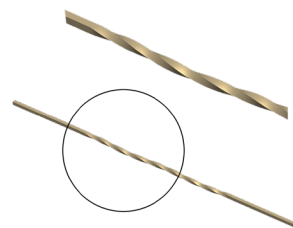
Units per machine: 2

> Tooling made of treated steel F1140 to make twisting in 18x18mm and 20x20mm square bar or 3/4"x3/4" and 5/8x5/8" inches Whitwort, in conventional carbon steel.

REF: 120-01-03-00127 (18x18mm and 20x20mm)

REF: 125-01-03-00103 (3/4x3/4" and 5/8x5/8" inches Whitwort)

Standard tooling.



Tooling for scrolling 40mm square and flat bar 50x10 mm or 1 3/4" and 2"x3/8" inches whitwort



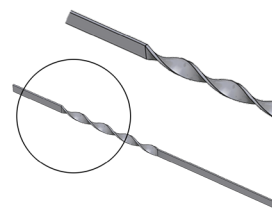
Units per machine: 2

> Tooling made of treated steel F1140 to make the scrolling in 40x40mm square bar and 50x10mm flat bar or 1 3/4"x1 3/4" and 2"x3/8" inches Whitwort, in conventional carbon steel.

REF: 120-01-03-00126 (40x40mm y 50x10mm)

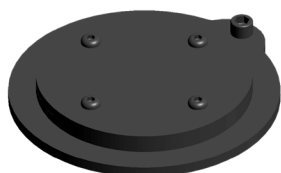
REF: 125-01-03-00104 (1 3/4"x1 3/4" y 2"x3/8" inches Whitwort)

Standard tooling.



OPTIONAL ACCESSORIES

Belly top railing tooling diameter 225mm



REF: 140-01-03-00003

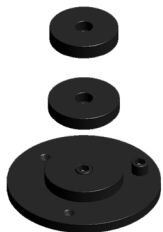
> Tooling to make the belly top railing styles, very used in balconies and windows.

Optional tooling.



Inner diameter	Maximum capacity	Weight
225mm	16mm round or square.	12 Kg.

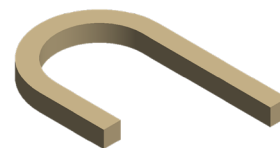
Flat bent rings, inner diameter 96,100,110mm



REF: 140-01-03-00005

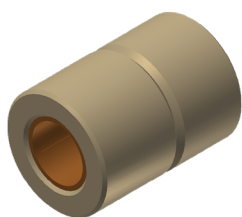
> Tooling made of steel to make bending operations in square and round bars and the so called British Rail.

Optional tooling.



Inner diameter	Maximum capacity	Weight
96,100,110mm	16mm round or square.	10 Kg.

Edge scroll tooling



REF: 140-01-03-00006

> Tooling made of treated steel to make volutes or spirals on its edge in order to give it a different aspect, very used in some specific countries.

Maximum capacity: round or square 25mm.

Weight: 0,400 kg.

Optional tooling.



Baskets tooling



REF: 140-01-03-00012

> Tooling to make all kinds of ornamental baskets in different sizes in square or round.

> Available tooling for millimeter and inch square sizes

Maximum capacity: 4 square or round bars of 12mm.

Weight: 55kg.

Optional tooling.

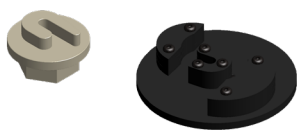


Millimetres

Inches

Oval scrolls tooling

REF: 140-01-03-00004



> Tooling made of steel to make oval scrolls for all kinds of rails.

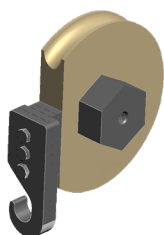


Optional tooling.

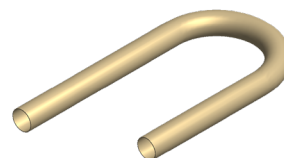
Units per tooling	External diameter	Maximum capacity	Weight
2	240x190mm	16 mm square or round	11 Kg.

Bent pipe in fixed radius

REF: 140-01-03-00002



> Tooling made of steel to make bents in adjustable and fixed radius and different degrees.



Optional tooling.

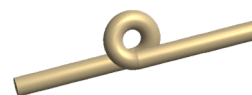
Pipe max. diameter	Min. pipe thickness	Radius of the piece	Degrees	Weight
40mm	3mm	3 times the pipe diameter.	Maximum 180°	15 to 35 Kg.

Double eyed tooling

REF: 140-01-03-00001



> Tooling to make the folding commonly called "pig's tail" it's very used in balconies, handrails and many ornamental utilities.



Optional tooling.

Pieces per tooling	Double eye	Capacidad máxima	Weight
7	To the right , to the left and double.	16mm Round.	35 Kg.

OUR RANGE OF MACHINERY



IRON WORKERS



SECTION BENDING
MACHINES



NON-MANDREL PIPE
BENDER



HORIZONTAL PRESS
BRAKES



TWISTING/SCROLL
BENDING MACHINES



HYDRAULIC PRESS
BRAKES



HYDRAULIC SHEAR
MACHINES



GAS FORGES



IRON EMBOSsing
MACHINES



END WROUGHT IRON
MACHINES



BROACHING MACHINES



POWER HAMMERS



PRESSES FOR LOCKS

WARRANTY

Nargesa machines have 3 years warranty provided that the customer registers it in our website. Otherwise it would be only one year warranty. This one encloses any manufacturing default all along these 3 years for components. Any misuse is excluded from this condition. Labor, back and forth shipping and any eventual repair, are not included in this warranty.

Partner companies



Airpharm

SHIPMENT EVERYWHERE

Nargesa will arrange transport up to final destination, whenever the customers asks for so. There is also the possibility for the customer to arrange the shipment himself with his own agency.

TECHNICAL ASSISTANCE

All our customers have access to technical support quickly and efficiently.

90% of incidences are solved out on the phone, mail, Skype or video-conferencing in less than 24hours. In case of needing presencial technical assistance, we may as well send a technician to the customer's facilities.

Follow us on

PRADA NARGESA, S.L.

Ctra. De Garrigàs a Sant Miquel s/n
17476 Palau de Santa Eulalia (Girona) Spain
Tel. +34 972 568 085

www.nargesa.com

nargesa@nargesa.com



This information might undergo changes