

N NARGESA®

IRON EMBOSSING MACHINES

NOA60



+ than 40 years
manufacturing industrial machinery

IRON EMBOSSING MACHINES

The NOA60 Nargesa embossing machine cold prints and shapes iron to emboss different designs in relief, depending on the roller you are working with. Very popular for ornamental forgings to emboss designs on plates, tubes or square bars for railings, bars, fences, grilles, or hallways, adding economic, decorative and artistic value.

GET A QUOTE

Please complete the following form. We'll contact you in less than 24 hours.
Business days.

HOW IT WORKS VIDEO

Video on how the machine works.

Follow us on

IRON EMBOSSING MACHINES

The NOA60 Nargesa embossing machine is designed to be used by a single worker, who will insert the material to be stamped in one end. The rotation of the rollers will expel the material from the machine automatically. Ideal to mould steel or aluminium as well as brass, bronze or copper alloys.



Ease of use

Any worker can do the job; no training is necessary.



Highly production

Thousands of components can be made in a single working day.



No surplus material

The design of the machine enables the surface of the material to be completely embossed, so there is no loss of material.



Value and exclusivity

All the work with a design is exclusive and adds economic value to the components manufactured.



Sales

Offers the possibility of selling the embossed components to different companies or iron warehouses.

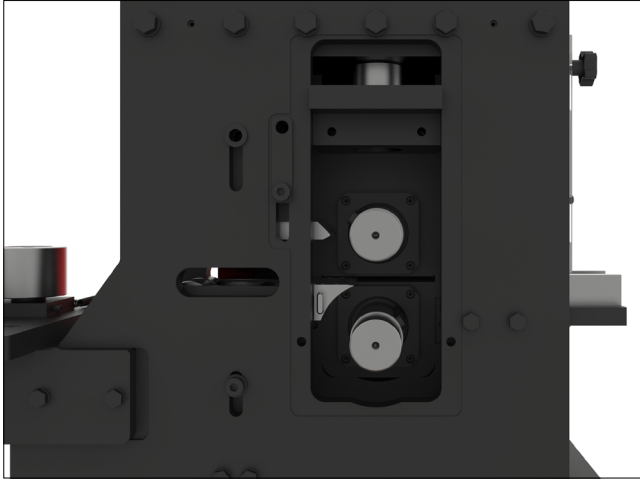


Toughness

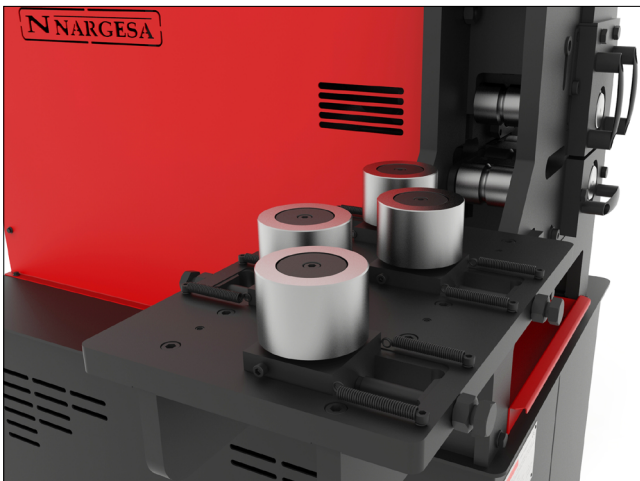
This embossing and stamping machine is designed to supply medium and large-scale production, working up to 20 hours a day.

TECHNICAL FEATURES

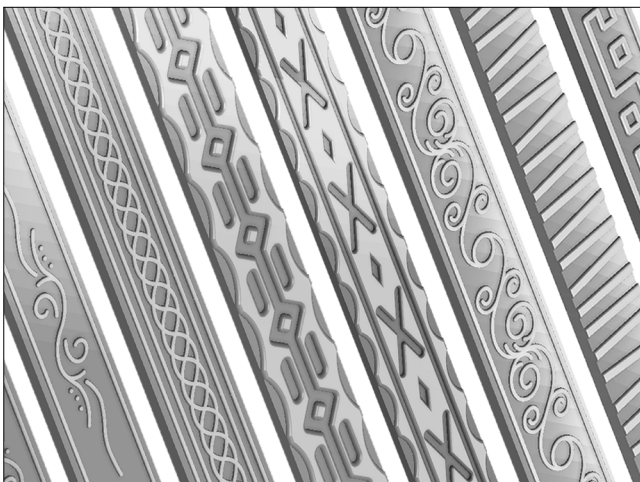
The Nargesa NOA60 cold embossing machine moulds iron to stamp different designs in relief on plates, solid objects or square tube.



- > **Electric motor**
5.5 KW Power (7.5 HP) at 1400 r.p.m.
- > **Electricity supply**
230/400 V three-phase.
- > **Electricity consumption**
22/12 A.
- > **Adjustable working speed**
0 - 10 metres per minute.
- > **Maximum capacity on square tube**
60x60 mm.
- > **Maximum capacity on solid square block**
20x20 mm.
- > **Maximum capacity on plates**
60x10 mm.

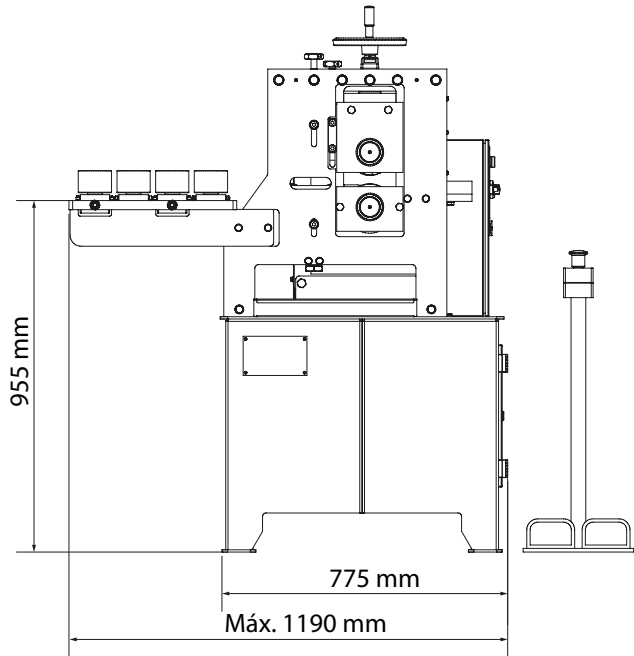
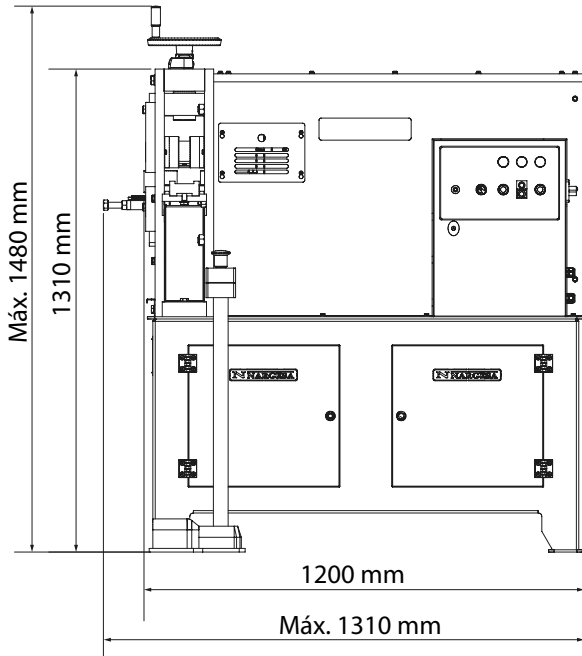


- > Tempered gear transmission.
- > Heavy duty roller bearings: Indispensable to guarantee the robustness and durability of the embossing machine.
- > Tempered and ground shafts.
- > Upper and lower shafts motorised, indispensable for good operation.
- > Includes a straightening device with adjustable 7 rollers, 3 vertical and 4 horizontal. This mechanism ensures the material comes out perfectly straight.
- > Large catalogue of rollers of different designs (See optional accessories at the bottom of the page. At the client's request, we can manufacture tailor made moulds, increasing the value of the finished product with exclusivity and personalization.
- > Lower bench palletized to easily transport the machine to the workplace or store it in case of lacking space.
- > Pallet made of steel and 3 layer cardboard box suitable for seafreight.
- > Optional: Fumigated wooden box NIMF15.



** All our products are manufactured in our facilities in Spain. The hydraulic and electrical components are all standard from the best leading European trademarks, with technical assistance all over the world: Rexroth, Bosch, Roquet, Schneider Electric, LG, Telemecanique, Pizzato etc...*

OUTSIDE DIMENSIONS



PACKAGING CHARACTERISTICS

- Tariff Item Code: 84621010
- Lower bench palletized to easily transport the machine to the workplace or store it in case of lacking space.
- The machine is shipped fully assembled.
- Pallet made of steel and 3 layer cardboard box suitable for seafreight.
- Optional: Fumigated wooden box NIMF15.

NOA60

Width	1310 mm
Depth	840 mm
Height	1590 mm
Volume	1,75 m ³
Net Weight	690 Kg.
Gross Weight	720 Kg.

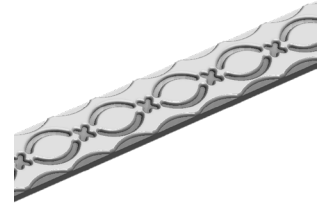
OPTIONAL TOOLING

Handrails embossing roller 01 NOA60



REF: 140-11-01-00001.40

- > Roller to emboss a 40 mm or 1"-1/2 inches handrail.
- > Guide 140-11-01-00401 or 140-11-01-00402 is required.
- > Ask the manufacturer about different dimensions.



Units per machine	Material thickness	Weight
1	From 6 to 10 mm	6,5 Kg.

Handrails embossing roller 02 NOA60



REF: 140-11-01-00002.40

- > Roller to emboss a 40 mm or 1"-1/2 inches handrail.
- > Guide 140-11-01-00401 or 140-11-01-00402 is required.
- > Ask the manufacturer about different dimensions.



Units per machine	Material thickness	Weight
1	From 6 to 10 mm	6,5 Kg.

Handrails embossing roller 03 NOA60



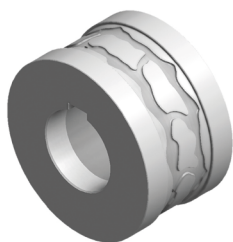
REF: 140-11-01-00003.40

- > Roller to emboss a 40 mm or 1"-1/2 inches handrail.
- > Guide 140-11-01-00401 or 140-11-01-00402 is required.
- > Ask the manufacturer about different dimensions.



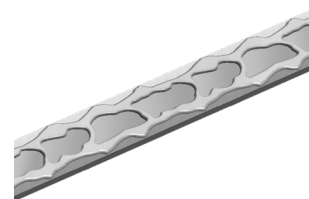
Units per machine	Material thickness	Weight
1	From 6 to 10 mm	6,5 Kg.

Handrails embossing roller 04 NOA60



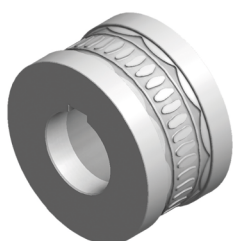
REF: 140-11-01-00004.40

- > Roller to emboss a 40 mm or 1"-1/2 inches handrail.
- > Guide 140-11-01-00401 or 140-11-01-00402 is required.
- > Ask the manufacturer about different dimensions.



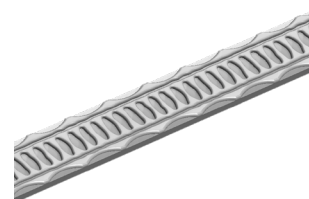
Units per machine	Material thickness	Weight
1	From 6 to 10 mm	6,5 Kg.

Handrails embossing roller 05 NOA60



REF: 140-11-01-00005.40

- > Roller to emboss a 40 mm or 1"-1/2 inches handrail.
- > Guide 140-11-01-00401 or 140-11-01-00402 is required.
- > Ask the manufacturer about different dimensions.



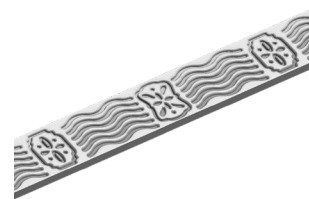
Units per machine	Material thickness	Weight
1	From 6 to 10 mm	6,5 Kg.

Handrails embossing roller 06 NOA60



REF: 140-11-01-00006.40

- > Roller to emboss a 40 mm or 1"-1/2 inches handrail.
- > Guide 140-11-01-00401 or 140-11-01-00402 is required.
- > Ask the manufacturer about different dimensions.



Units per machine	Material thickness	Weight
1	From 6 to 10 mm	6,5 Kg.

Handrails embossing roller 07 NOA60



REF: 140-11-01-00007.40

- > Roller to emboss a 40 mm or 1"-1/2 inches handrail.
- > Guide 140-11-01-00401 or 140-11-01-00402 is required.
- > Ask the manufacturer about different dimensions.



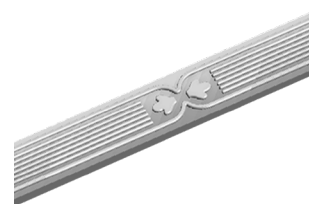
Units per machine	Material thickness	Weight
1	From 6 to 10 mm	6,5 Kg.

Handrails embossing roller 08 NOA60



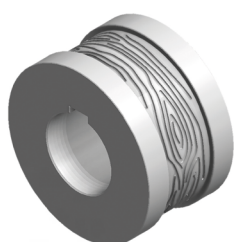
REF: 140-11-01-00008.40

- > Roller to emboss a 40 mm or 1"-1/2 inches handrail.
- > Guide 140-11-01-00401 or 140-11-01-00402 is required.
- > Ask the manufacturer about different dimensions.



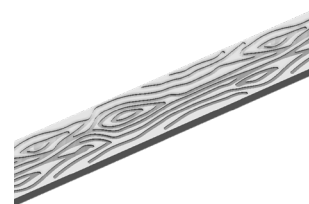
Units per machine	Material thickness	Weight
1	From 6 to 10 mm	6,4 Kg.

Handrails embossing roller 09 NOA60



REF: 140-11-01-00009

- > Roller to emboss handrail up to 60 mm.
- > Guide 140-11-01-00401, 140-11-01-00402 or 140-11-01-00400 is required.
- > Ask the manufacturer about different dimensions.



Units per machine	Material thickness	Weight
1	From 6 to 10 mm	6,1 Kg.

Handrails embossing roller 10 NOA60



REF: 140-11-01-00010.40

- > Roller to emboss a 40 mm or 1"-1/2 inches handrail.
- > Guide 140-11-01-00401 or 140-11-01-00402 is required.
- > Ask the manufacturer about different dimensions.



Units per machine	Material thickness	Weight
1	From 6 to 10 mm	6,5 Kg.

Handrails embossing roller 11 NOA60



REF: 140-11-01-00011.40

- > Roller to emboss a 40 mm or 1"-1/2 inches handrail.
- > Guide 140-11-01-00401 or 140-11-01-00402 is required.
- > Ask the manufacturer about different dimensions.



Units per machine	Material thickness	Weight
1	From 6 to 10 mm	6,5 Kg.

Handrails embossing roller 12 NOA60



REF: 140-11-01-00012.40

- > Roller to emboss a 40 mm or 1"-1/2 inches handrail.
- > Guide 140-11-01-00401 or 140-11-01-00402 is required.
- > Ask the manufacturer about different dimensions.



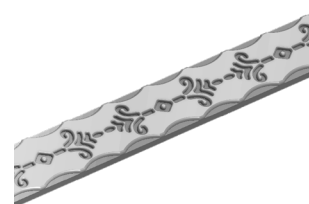
Units per machine	Material thickness	Weight
1	From 6 to 10 mm	6,5 Kg.

Handrails embossing roller 13 NOA60



REF: 140-11-01-00013.40

- > Roller to emboss a 40 mm or 1"-1/2 inches handrail.
- > Guide 140-11-01-00401 or 140-11-01-00402 is required.
- > Ask the manufacturer about different dimensions.



Units per machine	Material thickness	Weight
1	From 6 to 10 mm	6,5 Kg.

Handrails embossing roller 14 NOA60



REF: 140-11-01-00014.40

- > Roller to emboss a 40 mm or 1"-1/2 inches handrail.
- > Guide 140-11-01-00401 or 140-11-01-00402 is required.
- > Ask the manufacturer about different dimensions.



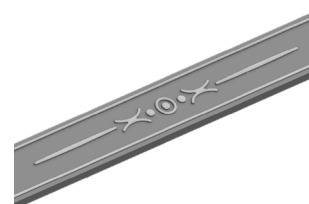
Units per machine	Material thickness	Weight
1	From 6 to 10 mm	6,5 Kg.

Handrails embossing roller 15 NOA60



REF: 140-11-01-00015.40

- > Roller to emboss a 40 mm or 1"-1/2 inches handrail.
- > Guide 140-11-01-00401 or 140-11-01-00402 is required.
- > Ask the manufacturer about different dimensions.



Units per machine	Material thickness	Weight
1	From 6 to 10 mm	6,4 Kg.

Handrails embossing roller 16 NOA60



REF: 140-11-01-00016.40

- > Roller to emboss a 40 mm or 1"-1/2 inches handrail.
- > Guide 140-11-01-00401 or 140-11-01-00402 is required.
- > Ask the manufacturer about different dimensions.



Units per machine	Material thickness	Weight
1	From 6 to 10 mm	6,4 Kg.

Handrails embossing roller 17 NOA60



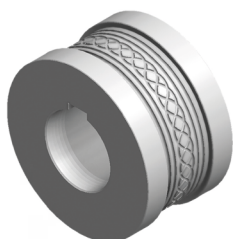
REF: 140-11-01-00017.40

- > Roller to emboss a 40 mm or 1"-1/2 inches handrail.
- > Guide 140-11-01-00401 or 140-11-01-00402 is required.
- > Ask the manufacturer about different dimensions.



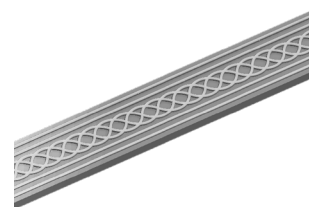
Units per machine	Material thickness	Weight
1	From 6 to 10 mm	6,4 Kg.

Handrails embossing roller 18 NOA60



REF: 140-11-01-00018.40

- > Roller to emboss a 40 mm or 1"-1/2 inches handrail.
- > Guide 140-11-01-00401 or 140-11-01-00402 is required.
- > Ask the manufacturer about different dimensions.



Units per machine	Material thickness	Weight
1	From 6 to 10 mm	6,4 Kg.

Handrails embossing roller 19 NOA60



REF: 140-11-01-00019.40

- > Roller to emboss a 40 mm or 1"-1/2 inches handrail.
- > Guide 140-11-01-00401 or 140-11-01-00402 is required.
- > Ask the manufacturer about different dimensions.



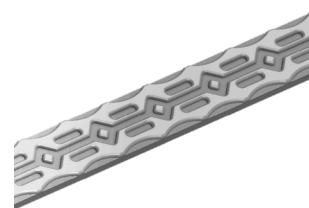
Units per machine	Material thickness	Weight
1	From 6 to 10 mm	6,4 Kg.

Handrails embossing roller 20 NOA60



REF: 140-11-01-00020.40

- > Roller to emboss a 40 mm or 1"-1/2 inches handrail.
- > Guide 140-11-01-00401 or 140-11-01-00402 is required.
- > Ask the manufacturer about different dimensions.



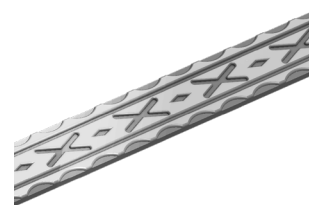
Units per machine	Material thickness	Weight
1	From 6 to 10 mm	6,5 Kg.

Handrails embossing roller 21 NOA60



REF: 140-11-01-00021.50

- > Roller to emboss a 50 mm or 2" inches handrail.
- > Guide 140-11-01-00401 or 140-11-01-00402 is required.
- > Ask the manufacturer about different dimensions.



Units per machine	Material thickness	Weight
1	From 6 to 10 mm	6,4 Kg.

Handrails embossing roller 22 NOA60



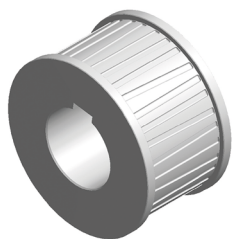
REF: 140-11-01-00022.40

- > Roller to emboss a 40 mm or 1"-1/2 inches handrail.
- > Guide 140-11-01-00401 or 140-11-01-00402 is required.
- > Ask the manufacturer about different dimensions.



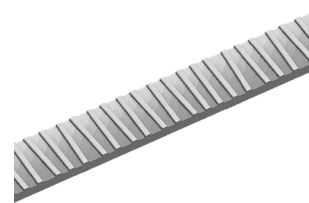
Units per machine	Material thickness	Weight
1	From 6 to 10 mm	6,4 Kg.

Handrails and square bars embossing roller 23 NOA60



REF: 140-11-01-00023

- > Roller to emboss handrail up to 60 mm and square bar up to 25 mm.
- > Guide 140-11-01-00401, 140-11-01-00402, 140-11-01-00400 or 140-11-01-00300 is required.
- > Ask the manufacturer about different dimensions.



Units per machine	Material thickness	Weight
1	From 6 to 10 mm	6 Kg.

Handrails embossing roller 24 NOA60



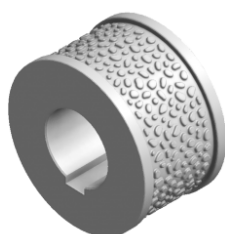
REF: 140-11-01-00024.40

- > Roller to emboss a 40 mm or 1"-1/2 inches handrail.
- > Guide 140-11-01-00401 or 140-11-01-00402 is required.
- > Ask the manufacturer about different dimensions.



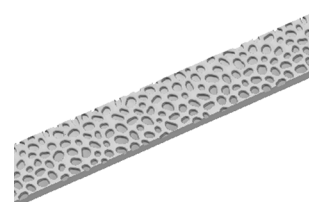
Units per machine	Material thickness	Weight
1	From 6 to 10 mm	6,4 Kg.

Handrails embossing roller 25 NOA60



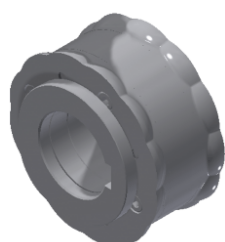
REF: 140-11-01-00025

- > Roller to emboss handrail up to 60 mm.
- > Guide 140-11-01-00401, 140-11-01-00402 or 140-11-01-00400 is required.
- > Ask the manufacturer about different dimensions.



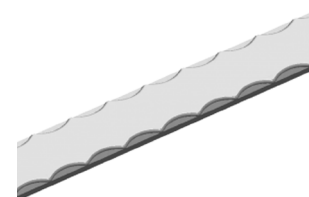
Units per machine	Material thickness	Weight
1	From 6 to 10 mm	6,3 Kg.

Roller for the side marking of flat bar NOA60



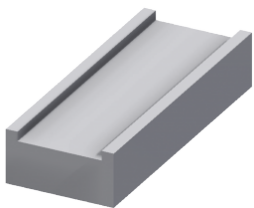
REF: 140-11-01-00028

- > Sectioned roller to emboss different flat bar sizes on the same kit. Adjustable to flat bars of 25mm 1", 30mm 1" 1/4, 40mm 1" 1/2 and 50mm 2".
- > Guide 140-11-01-00401, 140-11-01-00402, 140-11-01-00403 or 140-11-01-00404 are required.
- > Ask the manufacturer about different dimensions.



Units per machine	Material thickness	Weight
1	From 5 to 12 mm	12,5 Kg.

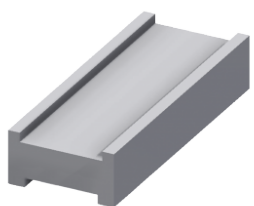
Inlet guide for 60 mm handrail NOA60



REF: 140-11-01-00400

> Inlet guide for 60 mm handrail.
Weight: 4,3 Kg.

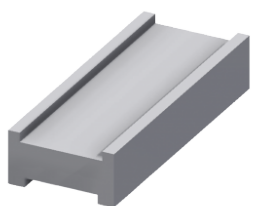
Inlet guide for 40 and 50 mm handrail NOA60



REF: 140-11-01-00401

> Inlet guide for 40 and 50 mm handrail.
Weight: 4 Kg.

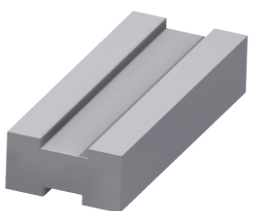
Inlet guide for 1" 1/2 and 2" inches handrail NOA60



REF: 140-11-01-00402

> Inlet guide for 1" 1/2 and 2" inches handrail.
Weight: 4 Kg.

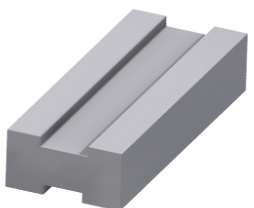
Inlet guide for 25 and 30mm handrail NOA60



REF: 140-11-01-00403

> Inlet guide for 25 and 30mm handrail.
Weight: 4,3 Kg.

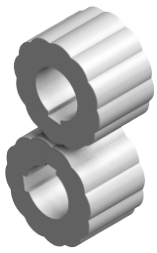
Inlet guide for 1" and 1" 1/4 inches handrail NOA60



REF: 140-11-01-00404

> Inlet guide for 1" and 1" 1/4 inches handrail.
Weight: 4,3 Kg.

Set of handrails and square bars embossing rollers 26 NOA60

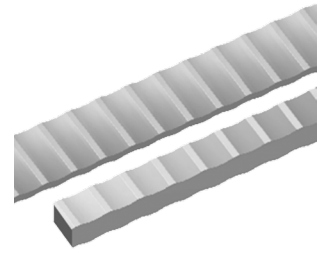


REF: 140-11-01-00026

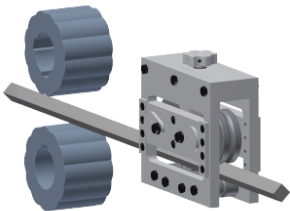
- > Rollers to emboss handrail up to 60 mm and square bar up to 20 mm or 3/4" inch.
- > Guide 140-11-01-00401, 140-11-01-00402, 140-11-01-00400 or 140-11-01-00300 is required.
- > To emboss edge square bar, an entrance guide is required 140-11-01-00027.
- > Ask the manufacturer about different dimensions.

Set per machine: 1

Weight: 11,4 Kg.



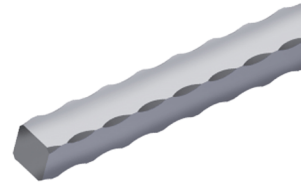
Inlet guide for edge square bar NOA60



REF: 140-11-01-00027

- > Inlet guide to emboss edge square bar up to 20mm or 3/4" inch.
- > To emboss edge square bar, one set of embossing rollers 140-11-01-00026 is required.

Weight: 18 Kg.



Set of square bar embossing rollers 301 NOA60

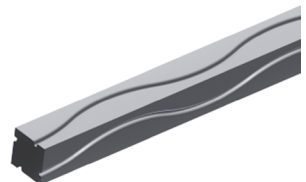


REF: 140-11-01-00301

- > Rollers to emboss square bar up to 10 mm or 3/8", 14 mm or 9/16" and 20 mm or 3/4" inch.
- > Guide 140-11-01-00300 is required.
- > Ask the manufacturer about different dimensions.

Set per machine: 1

Weight: 12,6 Kg.



Set of square bar embossing rollers 302 NOA60



REF: 140-11-01-00302

- > Rollers to emboss square bar up to 12 mm or 1/2", 16 mm or 5/8" and 18 mm.
- > Guide 140-11-01-00300 is required.
- > Ask the manufacturer about different dimensions.

Set per machine: 1

Weight: 12,6 Kg.



Set of square bar embossing rollers 303 NOA60

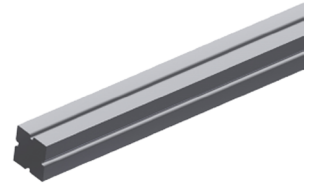


REF: 140-11-01-00303

- > Rollers to emboss square bar up to 10 mm or 3/8", 14 mm or 9/16" and 20 mm 3/4" inch.
- > Guide 140-11-01-00300 is required.
- > Ask the manufacturer about different dimensions.

Units per machine: 1

Weight: 12,9 Kg.



Set of square bar embossing rollers 304 NOA60

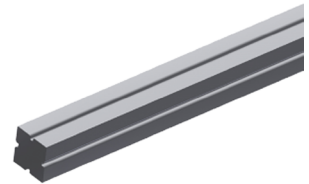


REF: 140-11-01-00304

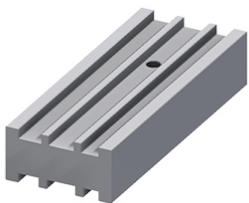
- > Rollers to emboss square bar up to 12 mm or 1/2", 16 mm or 5/8" and 18 mm.
- > Guide 140-11-01-00300 is required.
- > Ask the manufacturer about different dimensions.

Set per machine: 1

Weight: 12,9 Kg.



Inlet guide for square bar NOA60

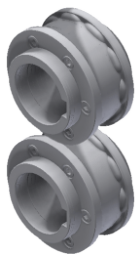


REF: 140-11-01-00300

- > Inlet guide for square bar of 10 mm or 3/8", 12 mm or 1/2", 14 mm or 9/16", 16 mm or 5/8", 18 mm and 20 mm or 3/4" inch.

Weight: 4 Kg.

Set of embossing rollers for 25mm or 1", 30mm or 1" 1/4, 35 and 40mm pipes NOA60



REF: 140-11-01-00500

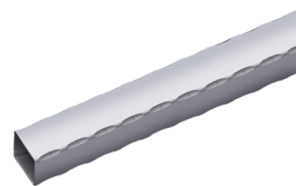
> Set of sectioned rollers to emboss different square or rectangular pipe sizes with the same set. Adjustable to the following pipes:

Square pipes: 25mm or 1", 30mm or 1" 1/4, 35 and 40mm.

Rectangular pipes: 25x20mm or 1"x3/4", 30x20mm or 1"1/4x3/4", 30x25mm, 35x20mm, 35x25mm, 40x20mm, 40x25mm, 40x30mm, 40x35mm.

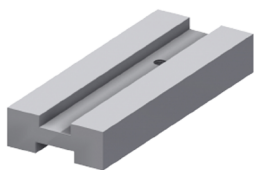
> Guide 140-11-01-00501 or 140-11-01-00502 is required.

> Ask the manufacturer about different dimensions.



Set per machine	Material minimum thickness suggested by manufacturer	Weight
1	3 mm	12 Kg.

Inlet guide for 25 mm or 1" and 30 mm or 1" 1/4 pipe NOA60

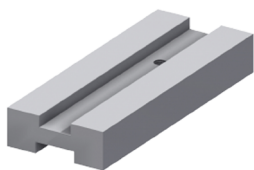


REF: 140-11-01-00501

> Inlet guide for 25 mm or 1" and 30 mm or 1" 1/4 pipe.

Weight: 3 Kg.

Inlet guide for 35 and 40 mm pipe NOA60

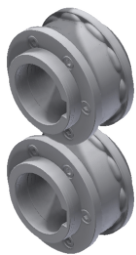


Ref: 140-11-01-00502

> Inlet guide for 35 and 40 mm pipe.

Weight: 2,8 Kg.

Set of embossing rollers for 50 and 60mm pipes NOA60



REF: 140-11-01-00503

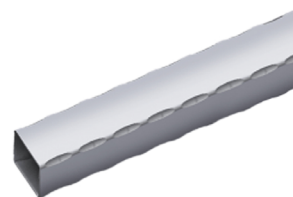
> Set of sectioned rollers to emboss different square or rectangular pipe sizes with the same set. Adjustable to the following pipes:

Square pipes: 50mm or 60mm.

Rectangular pipes: 50x20mm, 50x25mm, 50x30mm, 50x35mm, 50x40mm, 50x45mm, 60x20mm, 60x25mm, 60x30mm, 60x35mm, 60x40mm, 60x45mm, 60x50mm 60x55mm.

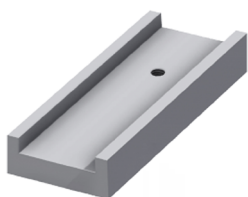
> Guide 140-11-01-00505 or 140-11-01-00506 is required.

> Ask the manufacturer about different dimensions.



Set per machine	Material minimum thickness suggested by manufacturer	Weight
1	3 mm	6 Kg.

Inlet guide for 50 mm pipe NOA60

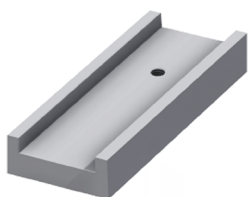


REF: 140-11-01-00505

> Inlet guide for 50 mm pipe.

Weight: 2,4 Kg.

Inlet guide for 60 mm pipe NOA60

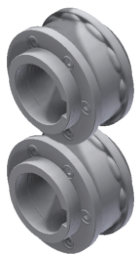


REF: 140-11-01-00506

> Inlet guide for 60 mm pipe.

Weight: 2,2 Kg.

Set of embossing rollers for 1" 1/2, 2" and 2" 1/2 inches pipes NOA60



REF: 140-11-01-00507

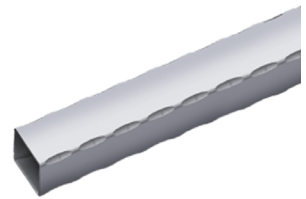
> Set of sectioned rollers to emboss different square or rectangular pipe sizes with the same set. Adjustable to the following pipes:

Square pipes: 1" 1/2, 2" and 2" 1/2 inches.

Rectangular pipes: 1"1/2x3/4", 1"1/2x1", 2"x1", 2"x1"1/4, 2"x1"1/2, 2"1/2x1"1/2 inches.

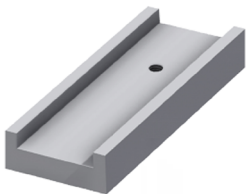
> Guide 140-11-01-00508, 140-11-01-00509 or 140-11-01-00510 is required.

> Ask the manufacturer about different dimensions.



Set per machine	Material minimum thickness suggested by manufacturer	Weight
1	3 mm	6 Kg.

Inlet guide for 1" 1/2 inches pipe NOA60

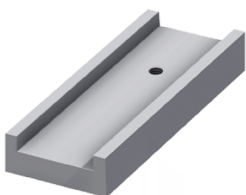


REF: 140-11-01-00508

> Inlet guide for 1" 1/2 inches pipe.

Weight: 2,6 Kg.

Inlet guide for 2" inches pipe NOA60

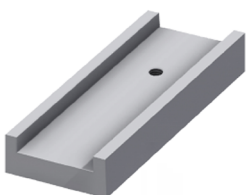


REF: 140-11-01-00509

> Inlet guide for 2" inches pipe.

Weight: 2,4 Kg.

Inlet guide for 2" 1/2 inches pipe NOA60

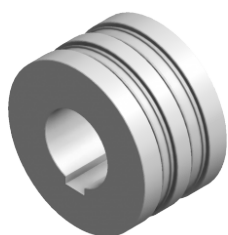


REF: 140-11-01-00510

> Inlet guide for 2" 1/2 inches pipe.

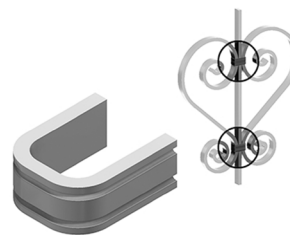
Weight: 2,2 Kg.

Handrails embossing roller 201 NOA60



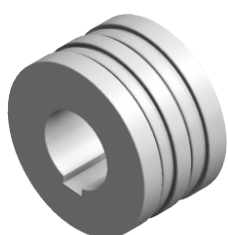
REF: 140-11-01-00201

- > Roller to emboss 12 mm or 1/2" and 15 mm handrail. For clamp forming.
- > Guide 140-11-01-00200 is required.
- > Ask the manufacturer about different dimensions.



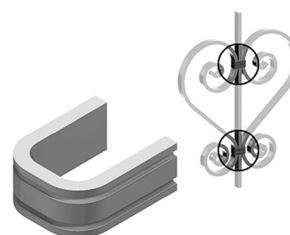
Units per machine	Material thickness	Weight
1	From 1 to 4 mm	6,6 Kg.

Handrails embossing roller 202 NOA60



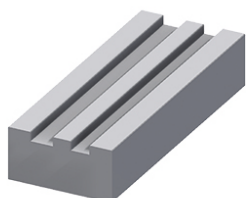
REF: 140-11-01-00202

- Roller to emboss 12 mm or 1/2" and 15 mm handrail. For clamp forming.
- Guide 140-11-01-00200 is required.
- Ask the manufacturer about different dimensions.



Units per machine	Material thickness	Weight
1	From 1 to 4 mm	6,6 Kg.

Inlet guide for 12 mm or 1/2" and 15 mm handrail NOA60



REF: 140-11-01-00200

- > Inlet guide for 12 mm or 1/2" and 15 mm handrail.
- Weight:** 4,6 Kg.

Rollerstand



REF: 140-00-00-00004

- > Seven-rollers stand.
- > Ask the manufacturer about different dimensions.

Working Height	Dimensions	Load capacity	Weight
650 / 1200 mm	2050x470 mm	800 Kg.	65 Kg.

OUR RANGE OF MACHINERY



IRON WORKERS



SECTION BENDING
MACHINES



NON-MANDREL PIPE
BENDER



HORIZONTAL PRESS
BRAKES



TWISTING/SCROLL
BENDING MACHINES



HYDRAULIC PRESS
BRAKES



HYDRAULIC SHEAR
MACHINES



GAS FORGES



IRON EMBOSING
MACHINES



END WROUGHT IRON
MACHINES



BROACHING MACHINES



POWER HAMMERS



PRESSES FOR LOCKS

WARRANTY

Nargesa machines have 3 years warranty provided that the customer registers it in our website. Otherwise it would be only one year warranty. This one encloses any manufacturing default all along these 3 years for components. Any misuse is excluded from this condition. Labor, back and forth shipping and any eventual repair, are not included in this warranty.

Partner companies.



Airpharm

SHIPMENT EVERYWHERE

Nargesa will arrange transport up to final destination, whenever the customers asks for so. There is also the possibility for the customer to arrange the shipment himself with his own agency.

TECHNICAL ASSISTANCE

All our customers have access to technical support quickly and efficiently.

90% of incidences are solved out on the phone, mail, Skype or video conferencing in less than 24hours. In case of needing presencial technical assistance, we may as well send a technician to the customer's facilities.

Follow us on

PRADA NARGESA, S.L.

Ctra. De Garrigàs a Sant Miquel s/n
17476 Palau de Santa Eulalia (Girona) Spain
Tel. +34 972 568 085

www.nargesa.com

nargesa@nargesa.com



This information might undergo changes